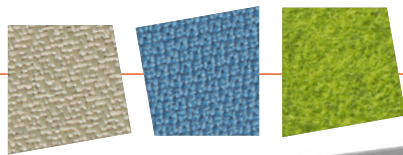


# ACTIVE.T KEEPS EMPLOYEES ACTIVE.

**FABRIC-COVERED FLY-BY SCREEN**  
height-adjustable through 140 mm  
in the fabric groups 81, 82, 91 and 92.



**UP-DOWN CONTROL**  
for rapid height  
adjustment using just  
two buttons **between**  
**650 and 1300 mm.**



**FRAME**  
available in white,  
aluminium and black.

**CABLE CHAIN**  
for vertical wire management.

**DESK TOP**  
in 25 mm MFC,  
bolted to the frame  
side pieces.

**SURFACE FINISHES**  
Top in solid colour and  
patterned melamine



# ACTIVE.T INFOCARD



Supplied ready for K+N SMART.OFFICE as standard

Supports the optimum use of the desk's functionality (changing from sitting to standing).

Connect the ID Connect Mini and install the Desktop App easily and once only!



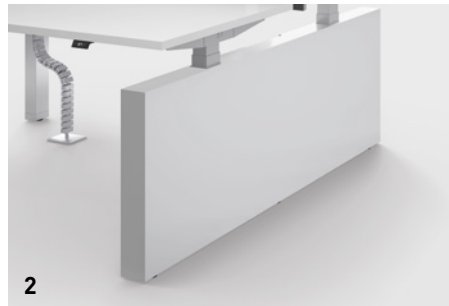
ID-CONNECT MINI

|                                        | Single desk                                | Double bench                                   |
|----------------------------------------|--------------------------------------------|------------------------------------------------|
| Electrical height adjustment           | 650 - 1300 mm                              | 650 - 1300 mm                                  |
| 25 mm top                              | Widths 1200 - 2000 mm<br>Depths 700 - 1000 | Widths 1200 - 1800 mm<br>Depths 1480 - 1880 mm |
| Cut-outs in the desk top (option)      | 1 - 3 cut-outs                             | -                                              |
| Clip-down cable tray, opens both sides | Height 72 and 105 mm                       | Central cable tray                             |
| Side trims                             | left, right, both sides                    | left, right, both sides                        |
| Modesty panel                          | <input type="checkbox"/>                   | -                                              |
| Screens with fabric cover              | Height 430 mm, height above desk 450 mm    | Height 800 mm, height above desk 510 mm        |
| Fly-by screen with fabric cover        | Height 805 mm, height above desk 450 mm    | -                                              |
| <b>Accessories</b>                     |                                            |                                                |
| Vertical cable management              | Cable chain, 40-segment                    | Cable chain, 30 and 40-segment                 |
| Cable clamps                           | <input type="checkbox"/>                   | <input type="checkbox"/>                       |
| CPU holder                             | <input type="checkbox"/>                   | <input type="checkbox"/>                       |
| <b>Wire management</b>                 |                                            |                                                |
| Sockets                                | <input type="checkbox"/>                   | <input type="checkbox"/>                       |

■ Standard □ Optional



1



2

### 1 | SIDE TRIMS FOR SINGLE DESK

Steel side trims with 10 mm levelling adjustment and in the matching desk depth can be fitted to either or both sides. Cable outlet is not provided.

### 2 | SIDE TRIMS FOR BENCH SYSTEM

Steel side trims with 10 mm levelling adjustment and in the matching desk depth can be fitted to either or both sides. Cable outlet is not provided. Dimensions (h x w): 537 mm x 85 mm

### 3 | DESK-TOP SCREEN

Fabric-covered desk-top screens are clamped to the rear of the desk top.

### 4 | FLY-BY SCREENS

Fly-by screens are height-adjustable through 140 mm.



3



4



5



6

### 5 | BENCH SYSTEM

In the following widths: 1200, 1400, 1600 and 1800 mm. Depths are 1480, 1680 and 1880 mm. The basic adjustment is via a simple up/down control.

### 6 | TOP

25 mm MFC top, bolted to the frame side pieces. Adaptor cut-outs to allow cable access can be specified as an option.