



MyFlow[®]
Furniture.


by ISKU

A close-up photograph of a wooden chair seat. The seat is covered in a textured, orange-brown fabric. A wooden slat is visible on the left side, and the background shows a dark, textured surface, possibly a table or another part of the chair.

MyFlow®

**- Unlock the true potential
of your work environment.**

MyFlow® furniture collection is a perfect blend of style and functionality. The collection boasts a sleek Nordic design that is sure to elevate the everyday work experience. Embrace the beauty of MyFlow® and discover a new level of elegance and inspiration.



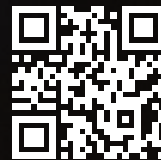
Pure materials.
High quality.
Finnish design.
For responsible future.





Crafted with care and commitment: Made by ISKU.

The MyFlow[®] product line, with its wide range of offerings, is crafted with precision and passion by ISKU. With nearly a century of experience in creating high-quality, durable furniture tailored to the needs of our customers, ISKU ensures that each piece in the MyFlow[®] collection meets the highest standards of excellence and serves our customers to the best of its ability.



MyFlow[®]
Furniture.









MyFlow® - Embracing Versatility.

A harmonious blend of premium design and functionality, this collection is built to cater to the diversity of your needs and to embrace versatility with a touch of luxury.

The MyFlow® collection is thoughtfully crafted to seamlessly integrate into almost any environment, from public spaces to offices and even remote workstations. Its ultimate goal is to provide practical comfort and enhance productivity by fostering a sense of flow and coziness.

MyFlow[®]
Furniture.









Elevating every detail and mastering the art of cohesion.

With MyFlow, we set out to solve the challenges that every interior designer faces: how to easily create a cohesive yet uniquely functional space that exudes elegance and style.

The result is a harmonious ensemble that boasts a rounded Nordic design language, premium materials, and refined details that highlight both timelessness and functionality, all while elevating the ambiance of everyday life.

MyFlow®
Furniture.









Inspired by Nature.

Inspiration for MyFlow was found in Finnish nature, specifically the round cliffs by the archipelago. The foundation of the design lies in utilizing that round form throughout the furniture family.

MyFlow® collection meets the highest standards of excellence and serves our customers to the best of its ability. All of the products in this product line are made in accordance with sustainable development principles and carbon footprint product cards are available for each item.

MyFlow®
Furniture.









Safety with Materials.

The entire MyFlow product family is available with antimicrobial materials that cut the infection chains.

Antimicrobial contact surfaces help creating safe spaces to work, study and thrive. Choosing antimicrobial furniture is a long-term investment for health and well-being resulting in economic prosperity.





”

Our experiences are ultimately the things
that guide us in everything we do.

MyFlow is designed to bring harmony and
a good energetic flow into any space.
The elements of form and design create
a feeling of unity, leaving space
for the human flow.

”

Designer Vertti Kivi

MyFlow[®]
Furniture.



Collection of tools to empower designers.

MyFlow® collection is made accessible for the designers. Our comprehensive range of products comes complete with all the essential information, from dimensions to materials, making it easy to incorporate our pieces into any project.

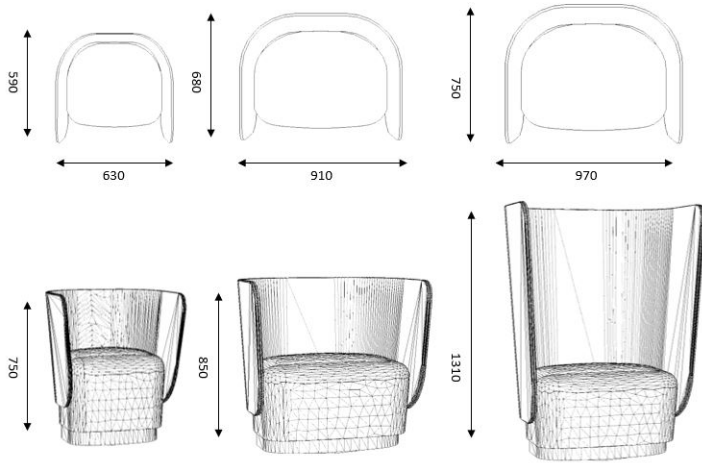
We understand the needs of architects and interior designers, which is why we have made available all the necessary files (DWG, GDL, Revit) and made the collection available at pCon. A dedicated point of contact for design firms is provided as well.

Learn more: isku.com/en/object-libraries/

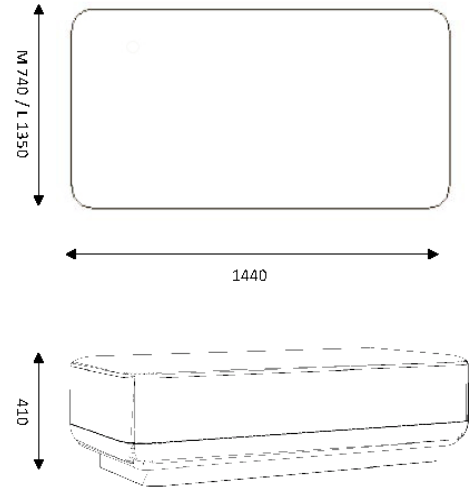


MYFLOW PRODUCT FAMILY

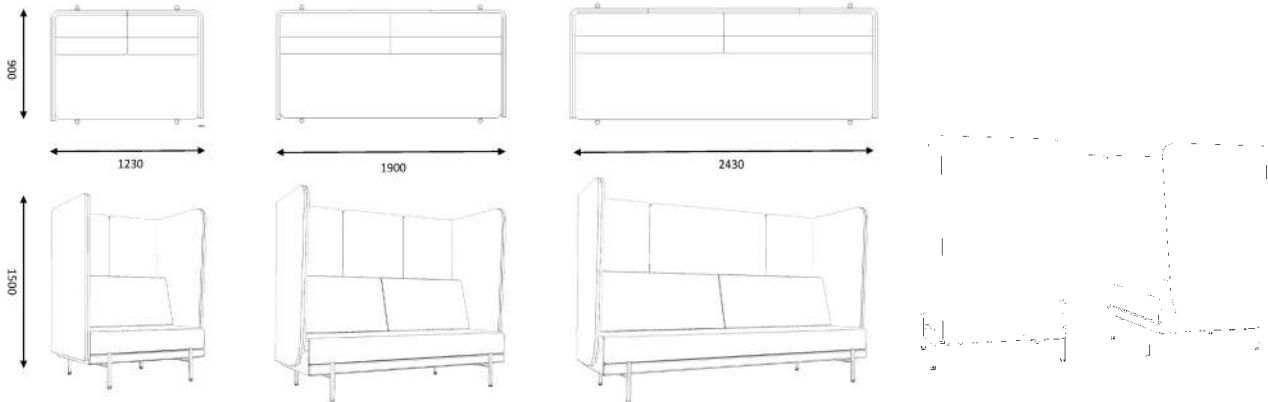
MyFlow Lounge



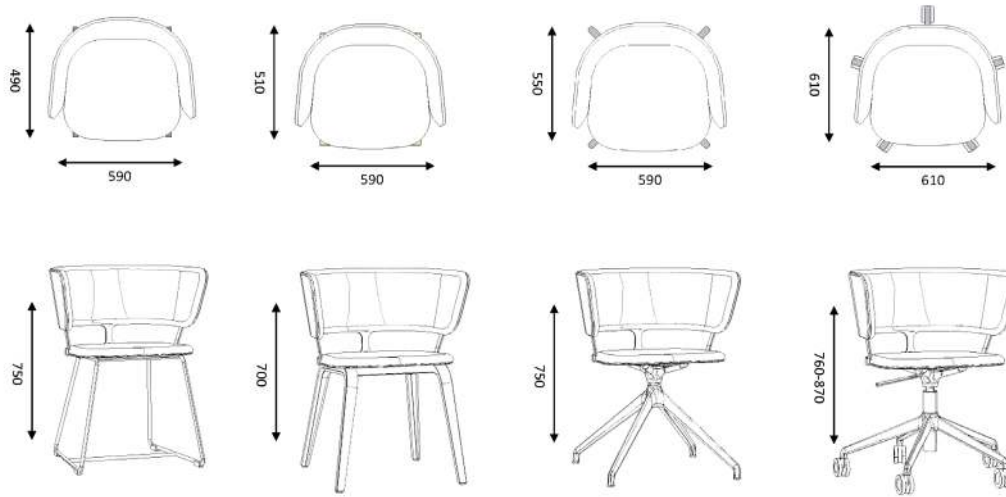
MyFlow Puff M & L



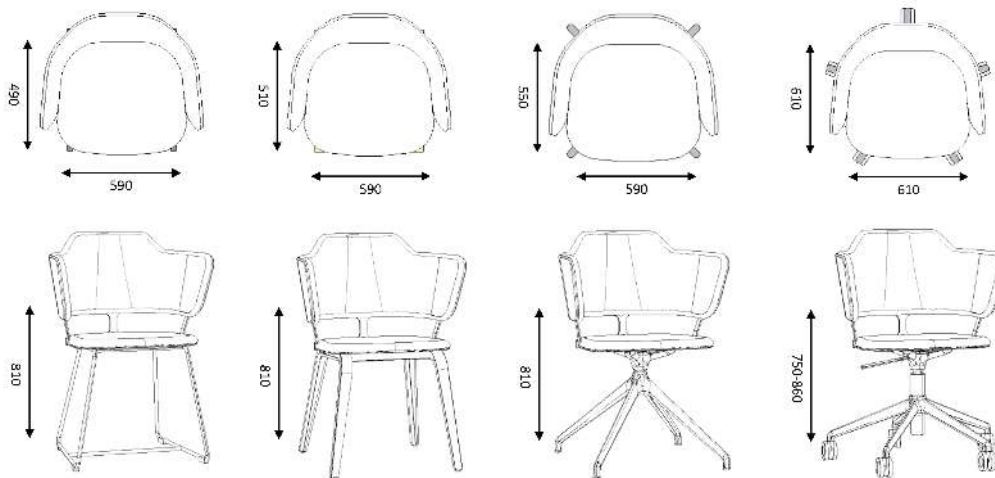
MyFlow Open Office Meeting



MyFlow Chair



MyFlow Meeting Chair



MyFlow Meeting table

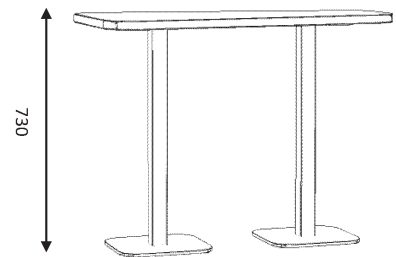
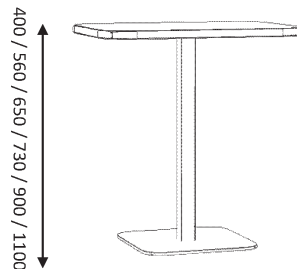
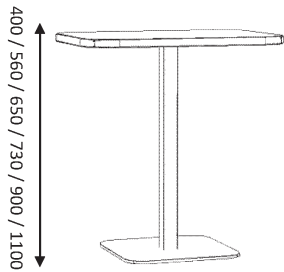
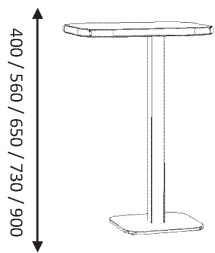
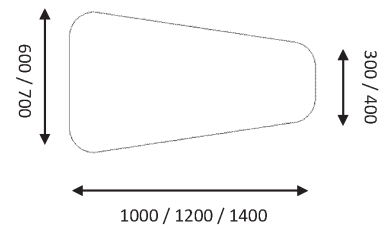
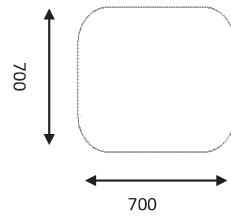
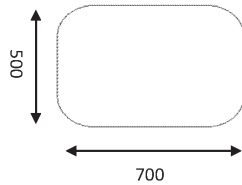
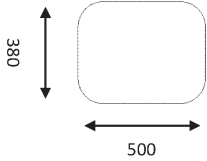


1000 / 1200

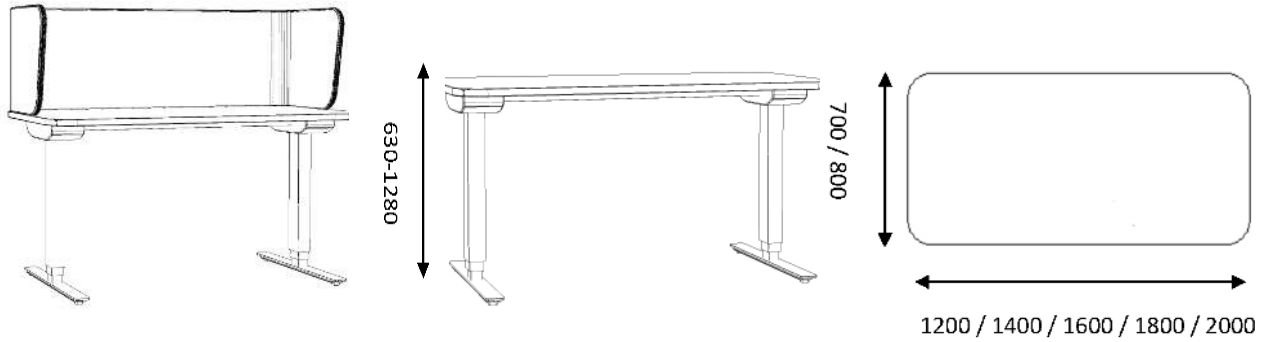


2000

MyFlow Side tables



MyFlow Working table



MyFlow Storage Box M and L & MyFlow Box

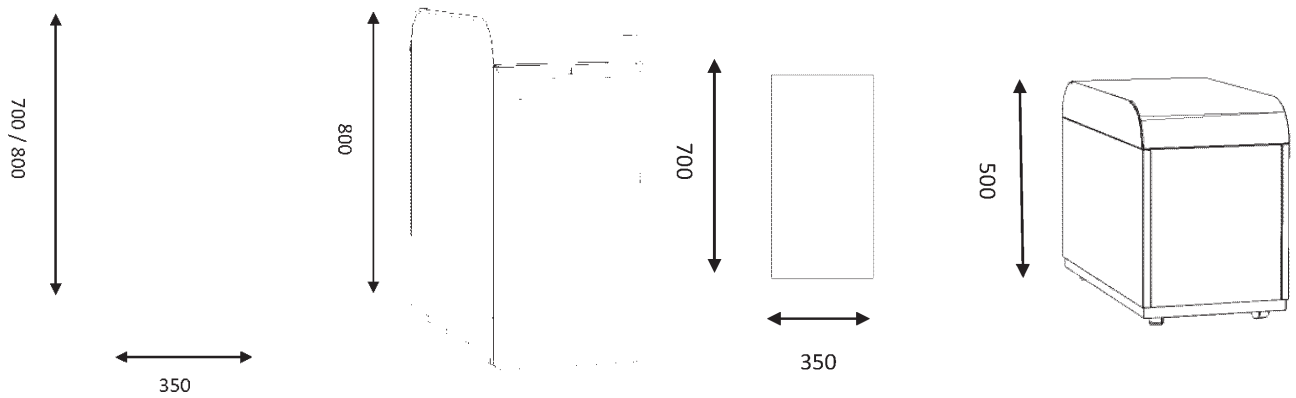


Table top

Hard Materials

Technical veneer



LN
Birch natural

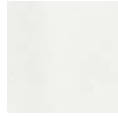
Laminate



Lam 421
Birch



Lam 428
Oak



Lam 415
White



Lam 427
Dark grey



Lam 435
Black



Lam 430
Light grey

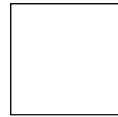
Open Office Meeting (table top in armrests) Accessorie (Quick box in meeting table)



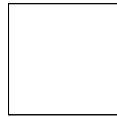
Ash natural



MDF black



MDF white



White metal



Grey metal



Table leg

Wooden leg (meeting table only)



Ash natural

*Always combined with metallic parts, choose preferred color from "metallic parts".



Black IM-72
(RAL 9005)



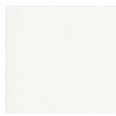
White IM-73
(RAL 9016)



Chrome

Storage frames S, M & L

Melamine



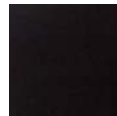
Mel 114
White



Mel 130
Light grey



Mel 127
Dark grey



Mel 135
Black



Front, back & top plates for storage M & L

Technical veneer



LN
Birch natural



LSG
Light grey



LPLY
Plywood



LMG
Dark grey

Laminate



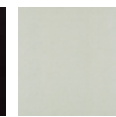
Lam 315
White



Lam 327
Dark grey



Lam 335
Black



Lam 330
Light grey

*Handle color black or white

Chairs | Wooden parts

Hard Materials

Technical veneer



LN
Birch natural

LSG
Light grey

LPLY
Plywood

Stained technical veneer LN



Birchbeech

White 1

Black 1

Brown 1

Brown 2



Brown 3

Brown 4

Brown 5

Brown 6

Chairs | Frame

Metal | Leg



Silver IM-89
(RAL 9006)

Graphite IM-88
(RAL 9007)

Black IM-72
(RAL 9005)

White IM-73
(RAL 9016)

Chrome

Metal | Frame / Jewellery



Black IM-72
(RAL 9005)

White IM-73
(RAL 9016)

Chrome

Copper

Brass



Fabrics

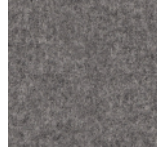
Figher

100% polyester
Martindale 130 000



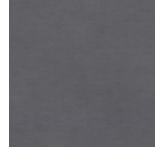
Blazer

100% Virgin Wool.
Nonmetallic dyestuffs.
Martindale \geq 50 000



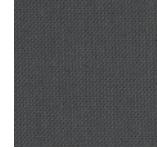
Gentle 2

60% new wool
20% polyester 20% nylon
Martindale 90 000



Select

85% New Zealand wool
15% polyamide
Martindale 200 000



Cura*

98% post-consumer recycled
polyester 2% polyester
Martindale 100 000



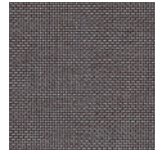
Blazer Lite **

100% Virgin Wool.
Nonmetallic dyestuffs.



Passion

91% New Zealand wool
9% polyamide
Martindale 200 000



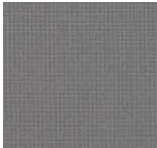
Steelcut Trio 3

90% new wool worsted
10% nylon
Martindale 100 000



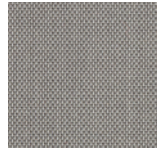
Fame

95% New Zealand wool
5% polyamide
Martindale 200 000



Breeze Fusion

88% New Zealand wool
12% polyamide
Martindale 100 000



Rondo

99% post-consumer recycled
polyester 1% Polyester
Martindale 70 000



Synergy

95% Pure New Wool, 5%
Nylon
Martindale \geq 100 000



* Available only for Open Office, Chairs, Meeting Chairs and Puff

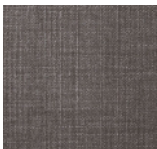
** For screens only

Antimicrobial option

Highland

100% Polyester with microporous Film
and FR Backcoating
Martindale 70 000

Stain resistant finish
Waterproof
Breathable
Antimicrobial
Shieldplus by Panaz





Embracing versatility.

myflow.com



JOIN US.



iskuglobal@isku.com



isku.com/en



[Isku global](https://www.linkedin.com/company/isku-global)



[iskuglobal](https://www.instagram.com/iskuglobal)



[Isku oy](https://www.youtube.com/isku_oy)