



sedus

se:flex

*Office swivel chair for
multi-user workstations*

The workstations of tomorrow are being developed today.

The working environment is changing at a rapid pace.

Modern companies are facing ever increasing rental and ancillary expenses. At the same time, increasing digitalisation and networking are leading to new ways of working that are no longer dependent on fixed workplaces. The consequence: expensive work space is, on average, only occupied for half the time.

Many companies are now responding to this development and are increasingly opting for smart working solutions characterised by non-territorial workplace concepts. This leads to an increasing number of temporary workstations, which are used by several employees at different times.

Multi-user workstations are on advance.





47%
in the office

21%
not at the workstation

32%
in the office,
but not at a desk



Where do we work today?

The amount of work which is actually done directly at the desk is falling. Thanks to modern working tools, work is frequently done in other locations.

Sedus INSIGHTS 2

Multi-user workstations are the answer.

Already today on average 1.7 employees share a single workstation.

Sedus INSIGHTS 2

We all sit differently.

Can there still be a swivel chair for everyone?

Multi-user workstations are smart. However, they also mean that various users have to share a single swivel chair which is often leads to additional effort to adjust to the user's specific requirements.

The result: either the correct adjustment is not ideal or not made at all. Yet if swivel chairs are not adjusted correctly, this can result in incorrect postures, users become tired more quickly and productivity and motivation levels drop.

The successful use of multi-user workstations is only possible if they are designed in a smart way. The choice of flexible seating plays a key role.

Time to redefine sitting.





Ergonomic sitting is more productive.
Correctly adjusted swivel chairs ensure an ergonomic posture which, in turn, boosts concentration and well-being. The result: a healthy posture and more staying power.



An incorrect posture is not healthy.
If swivel chairs are not properly set to suit the individual's requirements, this can result in incorrect postures leading to fatigue more quickly and a drop in concentration.

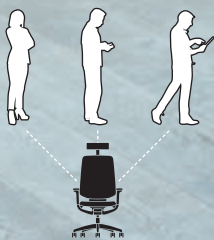
Sitting reinvented: One for all.

se:flex adjusts to each user.

se:flex is a comfortable swivel chair which adjusts automatically to the requirements of the most diverse users, regardless of how tall or heavy they are, without having to make any presets.

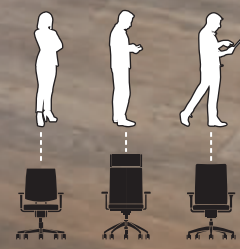
se:flex ensures a pleasant and ergonomic sitting experience right from the moment he sits down, the user can immediately concentrate on his work. Whether for individual work, collaboration or communication: se:flex gives all users optimum support in every work situation.

Sitting right automatically.



Today: multi-user workstations

Adjusting the chair properly at every new workstation costs time which often results in incorrect settings.



In the past: single workstations.
Every employee had their own chair which was set individually just once and then used in that setting over an extended period of time.

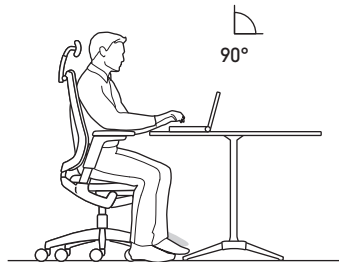
The chair that fits like a glove.

A swivel chair for all users and sitting positions.

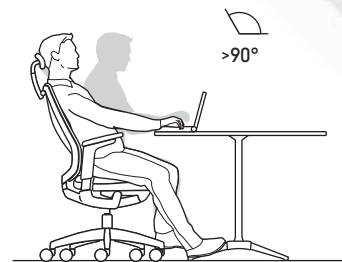
Those who work on projects at multi-user workstations need to think. Yet what they shouldn't have to think about is whether the chair is adjusted properly or not. With se:flex you can forget about such concerns. This chair adjusts automatically to each and every user. The user's body weight and proportions regulate the backrest pressure so that all positions are perceived as comfortable.



Lean forward and focus.
Thanks to the forward tilt of the seat and backrest, se:flex follows these movements.



Sit upright and concentrate.
A perfectly balanced backrest pressure ensures ideal support at all times.



Lean back and relax:
The large opening angle and the armrests which follow the chair's movements guarantee a wonderfully relaxed posture.

The ergonomic chair: because mobility matters.

The seat is also flexible and follows the movements of the pelvis. At the same time, the ergonomically shaped seat cavity offers perceptible support. Together, they result in a truly pleasant and active sitting sensation which encourages users to move. Moreover, the seat can be moved both forward and back to accommodate different leg lengths.



Focus on the job with se:flex.



Relax and lean back and with se:flex.

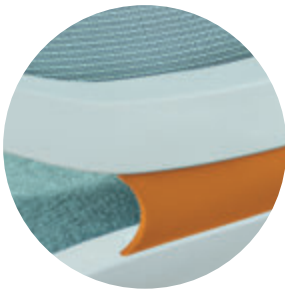
The automatic way to sit



As dynamic as you.

The flex element: offers freedom of movement in all directions.

The patented flex element facilitates a three-dimensional sitting experience and offers comfort and support in every situation. It joins the backrest to the frame and allows the backrest to follow the user's spontaneous movements automatically in all directions.



The armrests: support in every position and with every movement.

The tilted back sitting position is especially comfortable. Upon leaning back, the armrests move in sync and provide optimal support even in this position, e.g. for using mobile devices.

Designed to suit all: the adjustable armrests.



Small and petit users
can rotate the armrest pads up to 40 degrees inwards and also move them freely backwards and forwards.



Larger and heavier users
can rotate the armrest pads up to 20 degrees outwards and also move them freely backwards and forwards.

Freedom of movement when sitting



As diverse as its users.

Freedom of movement designed the way you like it.

How much advanced technology se:flex embodies is not visible at first sight. What is obvious, however, are the light, flowing shapes and the dynamic look. se:flex is as clear-cut in terms of its equipment and colour versions. The distinct design makes it fit seamlessly into any modern office environment.

Classic.

The polymer frame is available in either black or light grey.



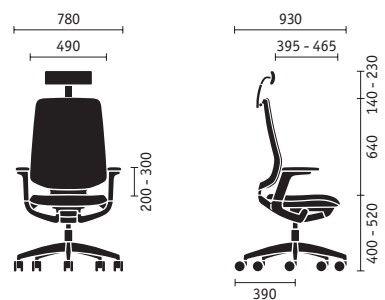
Moving.

The black castors are available in two versions for hard and soft floors.



Glossy.

In addition to the black or light grey polymer version, the base is also available with a polished aluminium finish.



Versions and variety



Lightens the load on your back even with upholstery.

Comfort for your back with either a mesh membrane or upholstery.

se:flex offers all users an ergonomic sitting experience thanks, to the comfortable mesh membrane in the backrest. This experience is further enhanced with the slimline yet soft upholstery which harmonises perfectly with the overall design. What's more, the mesh membrane and slim upholstery are available in a range of attractive colours to allow you to customise your se:flex.

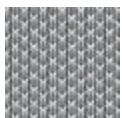


Mesh membrane

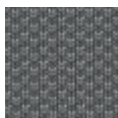
Single-coloured.

The light, transparent mesh membrane of the backrest is available in six different colours. The front and rear differ only in terms of their structure; the colours are the same.

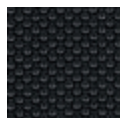
Light grey



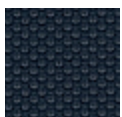
Mid grey



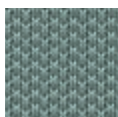
Black



Midnight blue



Matcha



Sand

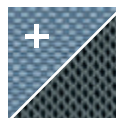


Slim upholstery

Two-coloured.

The colours and upholstery fabrics for the front of the slim upholstery can be freely selected from the Sedus fabric collections. Anthracite colours are always used for the rear.

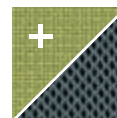
Nova



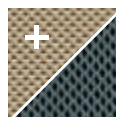
Remix



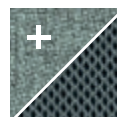
Fame



Atlantic



Step



Multi-coloured.

These fabric collections are available in a wide range of colours.

Look and feel

Versatile.

With its various mesh membrane and slim upholstery colours, se:flex can be customised in a variety of ways.



Perfectly designed down to the last detail.

Tuned for multi-user workstations – and individual needs.

With intelligent features and an extensive range of basic options, the se:flex is optimally tailored to the requirements of smart working environments. In addition, se:flex offers a wide range of configuration options to make it even more convenient to use and easy to adapt it to individual needs.

Features with added value.



More comfort.

Instead of the innovative mesh membrane, the backrest can also be equipped with slim upholstery for enhanced comfort.



Flexible.

The backrest follows the lateral movements of the user flexible in all directions and offers optimal support.



More support.

The optional comfort lumbar support features a flexible filling to increase the individual ergonomic comfort level.



Three-dimensional.

The freely adjustable armrests can be intuitively moved forwards and backwards as well as rotated to the inside and outside.



Within reach.

The adjustment buttons of the sliding seat and of the armrests are placed in such a way that they can be used easily.



More pleasant.

se:flex can be combined with a comfortable neck support and with a useful clothes hanger – ideal for changing workstations.

Details and features

Neck support

Clothes hanger

Generously sized backrest

Lumbar support

Multifunction armrests

Flex element

seat depth adjustment

seat height adjustment

Intelligent automatic weight system



Outstanding for people and the environment.

In its over 145-year-long history, sustainability has always played a central role at Sedus, even if this term didn't even exist back then. The responsible use of resources and respect and appreciation of our employees has been an integral part of Sedus right from the start. Corporate responsibility also means to develop and produce high-quality products which result in tangible benefits. Products which help people and bring joy to their lives. Some of our chairs and desks have been in use by our customers for decades, which is perhaps the greatest kind of sustainability.

se:flex also reflects these values. Even during the development phase, the focus was clearly on customer benefits and the environmental footprint. And this is truly outstanding. For example, thanks to a special plastic mixture which is particularly easy to recycle. As well as the knitted slim upholstery which is produced with such precision that there is no waste whatsoever. This not only results in maximum comfort, but also a great feeling.

More information is available at www.sedus.com

Company certificates







“ se:flex

*adjusts automatically to every user
and simultaneously offers the full comfort
of a work chair and the simplest handling.”*

Judith Daur, Sedus Design Team



sedus.com