

IULIO<sup>®</sup> HG



**DIREZIONALE  
EXECUTIVE**

---

OFFICE FURNITURE

---



IULIO<sup>®</sup> HG

Superfici lisce, smussate, piacevoli al tatto:  
uno stile inconfondibile sintesi di un equilibrio perfetto  
tra funzionalità e design.

*Smooth, chamfered, pleasant to the touch surfaces, unmistakable  
style, synthesis of a perfect balance between functionality and  
design.*

*Surfaces lisses, agréables au toucher, un équilibre parfait, synthèse  
inimitable entre fonctionnalité et design.*

design by  
S.I. Design





IHG 04



IHG 03

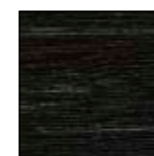
Finiture Legni  
Wood Finishes  
Finitions Bois



Cod. 15 Bianco Natur Mat  
Cod. 15 Natur Mat White



Cod. 48 Bianco High Gloss  
Cod. 48 High Gloss White



Cod. 16 Nero Natur Mat  
Cod. 16 Natur Mat Black



Cod. 49 Nero High Gloss  
Cod. 49 High Gloss Black

## DESCRIZIONE TECNICA

### SCRIVANIE E TAVOLI RIUNIONE CON PIANI IN VETRO RETROLACCATO

Costituite da piani vetro con struttura metallica. I piani in vetro temperato retro-laccato, spessore mm 12, con bordi perimetrali lavorati a filo lucido, sono utilizzabili solo in abbinamento alla struttura metallica ed ancorati alla stessa mediante supporti torniti in acciaio inox. I piani in vetro sono disponibili nei colori: NERO 10 e BIANCO EXTRA 78. La struttura metallica è formata da telaio realizzato in tubolare metallico a sezione rettangolare 50 x 25 sp. mm1,5 trattato con vernici a polveri epossidiche colore nero o bianco. Le gambe sono in estruso di alluminio lucido con vano verticale passacavi ispezionabile tramite carter rimovibile, sono dotate di anima strutturale in acciaio spessore mm 3 opportunamente sagomata e forata per l'ancoraggio ai telai e per i piedini livellatori. Le decorazioni sono costituite da profilature verticali in mdf sagomato, rivestito con 3d-foil, nei colori: NERO 10 e BIANCO EXTRA 78. Testate di finitura in abs stampato CROMATO. Le scrivanie con struttura metallica possono essere corredate da schiene (optional) realizzate con con pannelli di fibre di legno tipo MDF sp. mm 18 rivestiti in 3d-foil nei colori: BIANCO NATUR MAT 15 e NERO NATUR MAT 16.

### CASSETTIERA E MOBILI DI SERVIZIO

La struttura interna è realizzata con pannelli di particelle di legno sp. mm 18 nobilitati in melaminico rifiniti perimetralmente con bordo melaminico sp. mm 0,4 in tinta con la superficie. I frontali sono in vetro temperato retro-laccato, spessore mm 4, disponibili nei colori: NERO 10 e BIANCO EXTRA 78, con telaio perimetrale in alluminio. Apertura senza maniglia, con meccanismo premi-apri. La schiena, il top ed i fianchi finali sono realizzati con pannelli di fibre di legno tipo MDF sp. mm 18 con il lato interno nobilitato e le parti a vista sono rivestite in 3d-foil nei colori: BIANCO NATUR MAT 15, NERO NATUR MAT 16. I fianchi hanno sagoma arrotondata lungo i lati verticali anteriori e posteriori. Il top è sagomato lungo tutto in perimetro con modanatura perimetrale decorativa a T da mm 6 colore cromato, incassato in apposita fresata. La struttura interna dei cassetti è costituita da spondine e fondo in fibra rivestiti in PVC nero che scorrono su guide metalliche con cuscinetti in nylon dotati di fine corsa in apertura e self-closing in chiusura. La struttura poggia su ruote piroettanti realizzate in nylon.

### MOBILI CONTENITORI BASSI, MEDI E ALTI

Struttura costituita da: base, cappello, due fianchi e schiena (da sp. mm 18 inserita in fresata). È realizzata con pannelli di particelle legno sp. mm 18 nobilitati in melaminico, disponibili nei colori: ANTRACITE 55 e BIANCO BR. 69, rifiniti perimetralmente con bordo melaminico mm 0,4. Sulla base sono inseriti piedini regolabili in altezza, in nylon nero ( 4 unità ), con campo di regolazione di mm 15. Ripiani realizzati con pannelli di particelle legno sp. mm 25 nobilitato in melaminico, disponibile nei colori: ANTRACITE 55 e BIANCO BR. 69, rifiniti perimetralmente con bordo ABS mm 2 in tinta con la superficie. Sono dotati di ferramenta a scomparsa, posizionabili in altezza con passo di 32mm. Le ante ed i frontali (mobile 5 cassetti) sono in vetro temperato retro-laccato, spessore mm 4, disponibili nei colori: NERO 10 e BIANCO EXTRA 78, con telaio perimetrale in alluminio. Apertura con serratura per le ante. Le composizioni dei mobili sono da completare sempre con top+fianchi finali (forniti a parte).

### TOP DI FINITURA E FIANCHI FINALI

Tops e fianchi finali realizzati con pannelli di fibre di legno tipo MDF sp. mm 18 con il lato interno nobilitato e le parti a vista sono rivestite in 3d-foil nei colori: BIANCO NATUR MAT 15, NERO NATUR MAT 16. Il top è sagomato sul perimetro con modanatura a T da mm 6 colore cromato incassato in apposita fresata. I fianchi finali hanno sagoma arrotondata lungo il lato verticale anteriore.

## TECHNICAL DESCRIPTION

### DESKS AND MEETING TABLES WITH GLASS TOP REAR-LACQUERED

Formed by glass surfaces with a metal structure. The glass tops are 12 mm thick, tempered and rear-lacquered with a shiny rimmed perimeter edge. They can only be used in combination with metal structure, to which they are anchored by Inox steel supports. The glass tops are available in the following colours: BLACK 10 and EXTRA WHITE 78. The metal structure is made of frame composed of metal tubular with rectangular section 50x25, 1.5 mm thick, treated with stainless steel coloured with epoxy powder paints. The legs are made of extruded polished aluminum. They are equipped with a compartment with vertical cable guides that can be inspected by a removable cover, they have a structural steel core 3 mm thick shaped and perforated for fixing the frames and the levelling feet. The decorations consist of vertical profiles MDF shaped, covered with 3d-foil, in the following colours: HIGH GLOSS WHITE 48 e HIGH GLOSS BLACK 49. Finishing taps in printed abs CHROMED.

The desks with metal structures can be equipped with modesty panels (optional) with MDF type fibreboard panels of 18mm thick covered in a single layer pressed leaf thermoformable PVC in the following colours: NATUR MAT WHITE 15 and NATUR MAT BLACK 16, anchored on the metal legs through metal moulds appropriately shaped and treated with metallic silver coloured epoxy powdered paint.

### PEDESTALS AND DESK EXTENSIONS

The inside structure are made of melamine bloomed particleboard panels of 18mm thick perimetally finished with a melamine edge of 0.4mm thick in the same colour as the surface. The glass frontals are tempered rear-lacquered of 4mm thick, are available in the following colours: BLACK 10 and EXTRA WHITE 78. They are perimetally finished with a aluminium frame. Opening without handle, with mechanism push-open. The back, the top and final side panels are made with MDF type fibreboard panels of 18mm thick with bloomed internal sides, with the outer sides covered with 3d-foil in the following colours: NATUR MAT WHITE 15 and NATUR MAT BLACK 16. The side panels have rounded edges along the front and rear vertical sides. The top is shaped along the entire perimeter with a 6 mm perimetral decorative molding T in chromed colour, built-in in a special milling. The drawers internal structure has small side fibreboard panels and base covered in black PVC that slides on metal guides with nylon bearings fitted with runners for opening and self-closing in the lockup. The structure rests on a pirouette moving wheel made of nylon.

### LOW, MEDIUM AND HIGH CABINETS:

Structure made of 18 mm thick particleboards faced with melamine, available in colours: ANTHRACITE 55 and BR. WHITE 69, edge in 0.4 mm melamine. Height-adjustable feet in black nylon fixed under the base (4 pieces), with adjustment range of 15 mm. The shelves are made of 25 mm thick particleboards faced with melamine, available in colours: ANTHRACITE 55 and BR. WHITE 69. The edge surround is made of 2 mm ABS to match the surface. They are equipped with concealed hardware and can be fixed at height pitch of 32mm. The glass doors and the glass frontals (5 drawer furniture) are tempered rear-lacquered of 4mm thick, are available in the following colours: BLACK 10 and EXTRA WHITE 78. They are perimetally finished with a aluminium frame. Opening with lock for door. The cabinets are always completed with top finish + final side panels.

### FINISHING TOPS AND FINAL SIDE PANELS

Tops and side panels are made with MDF type fibreboard panels of 18mm thick with a bloomed internal sides with the visible parts covered IN 3D-FOIL in the following colours: NATUR MAT WHITE 15 and NATUR MAT BLACK 16. The top is shaped along the perimeter with a 6 mm. perimetral decorative molding T in chromed colour, built-in in a special milling. The side finishes have a rounded edge along the front vertical side.

## DESCRIPTION TECHNIQUE

### BUREAUX ET TABLES REUNION AVEC PLATEAUX EN VERRE LAQUE

Composés par plateaux en verre avec structure métallique. Les plateaux en verre trempé, retrolaqué ép. 12 mm, avec chant à fil poli sur tout le périmètre peuvent être utilisés en association avec la structure métallique et accrochés à la même à travers des supports en acier inox. Les pieds sont réalisés en aluminium poli extrudé avec niche passacable verticale, explorable à travers carter amovible, doté de noyau structural en acier ép. 3 mm périmètre et percé pour être fixé au châssis et pour les patins réglable. Les décorations sont post formé en profile mdf, revêtu en 3d-foil, dans les finitions: BLANC HIGH GLOSS 48 et NOIR HIGH GLOSS 49. Fronteau en finition abs pressé chromée. Les bureaux avec structure métallique peuvent être équipé de voile de fond (optionnel réalisé en panneau de mdf ép. 18 mm revêtu en 3d-foil dans les finitions: BLANC NATUR MAT 15 et NOIR NATUR MAT 16.

### CAISSON ET MEUBLE DE SERVICE

La structure interne est réalisée en panneaux de particules de bois melamines de 18 mm d'épaisseur, avec chant melamine de 0,4 mm d'épaisseur de la même couleur que la surface. Les parties frontales sont réalisées en verre trempé laque, 4 mm d'épaisseur, disponibles dans les couleurs: NOIR 10 e BLANC EXTRA 78, avec chassis en aluminium. Ouverture sans poignée, avec mécanisme "pousser-ouvert". La voile de fond, le top et côtés finaux tops sont réalisés en panneaux de mdf de 18 mm d'épaisseur avec les parties à vue avec un revêtement en 3d-foil; couleurs disponibles: BLANC NATUR MAT 15, NOIR NATUR MAT 16. La structure interne des tiroirs est constituée par des rebords et fond en fibre recouverts en pvc noir; les tiroirs coulissent sur des glissières métalliques avec des paliers en nylon et ils sont pourvus du mécanisme de fin de course en ouverture et de auto-fermeture en fermeture. La structure pose sur des roulettes pivotantes en nylon.

### MEUBLES BAS, MOYENS ET HAUTS:

Structure en panneau en particule de bois ép. mm 18 revêtement melamine, couleurs: ANTHRACITE 55 et BLANC BR. 69, chant en melamine mm 0,4. Sur la basé sont insérés 4 pieds réglables en hauteur, en nylon noir, avec plage de réglage de 15 mm. Etagères en panneaux en particule de bois ép. mm 25 revêtement melamine, couleurs: ANTHRACITE 55 et BLANC BR. 69. Chant en abs mm 2 même teinte de la surface. Fournie de visserie pour positionnement pas 32mm. Les portes et les frontals (meuble 5 tiroirs) sont réalisées en verre trempé laque, 4 mm d'épaisseur, disponibles dans les couleurs: noir 10 et blanc extra 78, avec chassis en aluminium. Ouverture avec serrure pour les portes. Toutes les compositions avec meubles de classement doivent être complétées avec un set top+côtés finals façonnées (fourni séparément).

### TOP DE FINITION ET CÔTÉS FINALS

Tops et côtés réalisés en panneaux de fibre de bois type mdf de 18 mm d'épaisseur avec le côté interne ennoblé et les parties en vue revêtues en 3d-foil dans les couleurs: BLANC NATUR MAT 15, NOIR NATUR MAT 16. Le top est façonné sur le périmètre avec moulure périmétrale en t de 6 mm d'épaisseur couleur chromée encastré après le fraisage. Les côtés ont un gabarit arrondi le long du côté vertical avant.

## ART.

SCRIVANIE CON PIANO IN VETRO (RETROLACCATO) desks with glass top (rear-lacquered)		SCHIENE PER SCRIVANIE CON PIANO VETRO modesty panels for desks with glass top		TAVOLI RIUNIONE CON PIANO IN VETRO (RETROLACCATO) meeting tables with glass top (rear-lacquered)																					
	<table border="1"><tr><td>L200</td><td>ART. 891</td></tr><tr><td>L218</td><td>ART. 892</td></tr></table>	L200	ART. 891	L218	ART. 892		<table border="1"><tr><td>L200</td><td>ART. 894</td></tr><tr><td>L218</td><td>ART. 895</td></tr></table>	L200	ART. 894	L218	ART. 895		<table border="1"><tr><td colspan="2">PER SCRIVANIE L. for desks w</td></tr><tr><td>L200</td><td>ART. 896</td></tr><tr><td>L218</td><td>ART. 897</td></tr></table>	PER SCRIVANIE L. for desks w		L200	ART. 896	L218	ART. 897		<table border="1"><tr><td>L200</td><td>ART. 902</td></tr><tr><td>L260</td><td>ART. 903</td></tr></table>	L200	ART. 902	L260	ART. 903
L200	ART. 891																								
L218	ART. 892																								
L200	ART. 894																								
L218	ART. 895																								
PER SCRIVANIE L. for desks w																									
L200	ART. 896																								
L218	ART. 897																								
L200	ART. 902																								
L260	ART. 903																								
<b>ART. 905</b>	<b>906</b>	<b>909</b>	<b>TOPS PER MOBILI</b> tops for cabinets		<b>COPPIA FIANCHI FINALI PER MOBILI BASSI, MEDI E ALTI</b> set of 2 final side panels for low, medium and high cabinets																				
<b>CASSETTIERA E MOBILI DI SERVIZIO SU RUOTE CON FRONTALI IN VETRO</b> pedestals and desk extensions on wheels with glass fronts			<b>APERTURA PREMI-APRI</b> opening with "push-open" system																						
				<table border="1"><tr><td>L63,6</td><td>ART. 766</td></tr><tr><td>L123,6</td><td>ART. 767</td></tr><tr><td>L183,6</td><td>ART. 768</td></tr><tr><td>L243,6</td><td>ART. 769</td></tr></table>	L63,6	ART. 766	L123,6	ART. 767	L183,6	ART. 768	L243,6	ART. 769													
L63,6	ART. 766																								
L123,6	ART. 767																								
L183,6	ART. 768																								
L243,6	ART. 769																								
<b>ART. 937</b> <small>DX right</small>	<b>938</b> <small>SX left</small>	<b>923</b>	<b>940</b> <small>DX right</small>	<b>941</b> <small>SX left</small>	<b>942</b> <small>DX right</small>	<b>943</b> <small>SX left</small>																			
<b>MOBILE BASSO L.60 CON 1 ANTA VETRO CON SERR.</b> low cabinet w 60 cms with 1 glass door with lock		<b>MOBILE BASSO L.60 CON 4 CASSETTI VETRO</b> low cabinet w 60 cms with 1 4 glass drawers	<b>MOBILE MEDIO L.60 CON 1 ANTA VETRO CON SERR.</b> medium cabinet w 60 cms with 1 glass door with lock		<b>MOBILE ALTO L.60 CON 1 ANTA VETRO CON SERR.</b> high cabinet w 60 cms with 1 with glass door with lock																				
<b>(DA COMPLETARE SEMPRE CON TOP + FIANCHI FINALI)</b> <b>(to be always completed with top+final side panels)</b>																									

Design

S.I. Design

Foto

Matic Animation

Progetto Grafico

Dam.co

Comunicazione Integrata

Prestampa

Grafiche Martintype

Stampa

Grafiche Martintype





**Las Mobili s.r.l.**

Via dell'Industria, n°81  
64018 Tortoreto (TE) - ITALY  
Tel. +39 0861 7831  
Fax +39 0861 786851  
e-mail: [las@las.it](mailto:las@las.it)  
[www.las.it](http://www.las.it)

