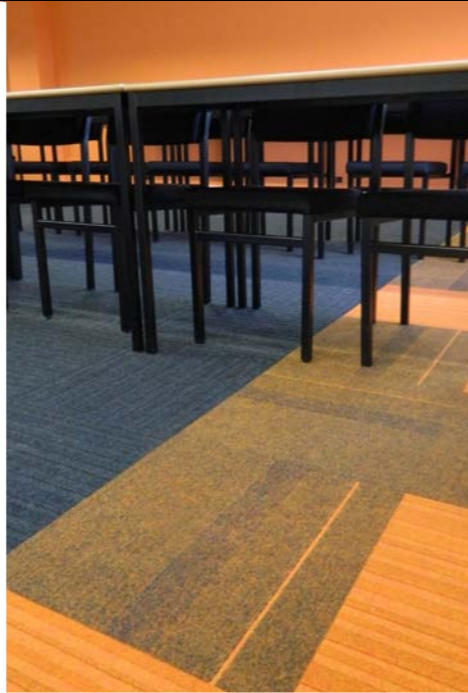




Product Catalogue

**burmatex<sup>®</sup>**



We are passionate about making our flooring products and aim to create truly inspirational environments for people to enjoy





Our product range offers traditional fibre bonded sheet and tile ranges, including entrance products; next generation structure bonded ranges offering the exceptional wear of fibre bonded product with high design; low level loop carpet tile ranges, and , textured loop and cut pile carpet tile ranges, inspired by the latest design and colour trends. Our luxury vinyl products are available



burmatex is a leading UK manufacturer of contract carpets and carpet tiles. We are passionate about making our flooring products and aim to help create truly inspirational environments.

Our products are used in a wide variety of private and public sector buildings, including schools, offices, universities, hospitals, leisure centres and care homes.

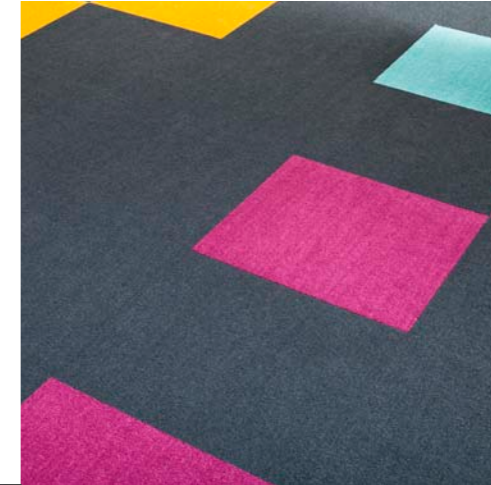


in traditional wood planks and in 50 cm x 50cm tiles to fit perfectly alongside our carpet tiles to create attractive and durable floor finishes that are easy to maintain.

The burmatex design team is a driving force in developing product ranges which reflect design and colour trends as well as developing

tile designs to meet customers' needs and providing a free in-house flooring layout design service.

burmatex is committed to best environmental practice in its manufacturing from the sourcing of raw materials, including recycled materials, minimising and reprocessing of waste, use of green electricity and



We hope that by reading our catalogue and visiting our website [www.burmatex.co.uk](http://www.burmatex.co.uk), we will inspire you to work with us to create really unique, really captivating floor designs.



recycled packaging. Because of this, the Building Research Establishment (BRE) has awarded our products the highest BREEAM ratings; mostly A+.

burmatex is a BS EN ISO 9001:2000 registered company (Cert No.FM1440). All products are tested to BSI/CEN standards in relation to durability, wear, flame retardancy, antistatic properties and colour fastness.







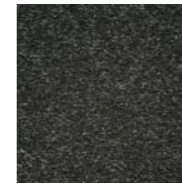
2126 Grampian Gold



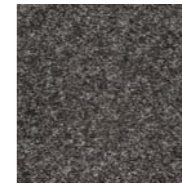
2128 Angus Tan



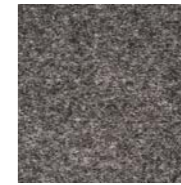
2129 Falkirk Fawn



2110 Berkshire Black



2109 Glamorgan Grey



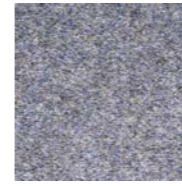
2111 Wiltshire Charcoal



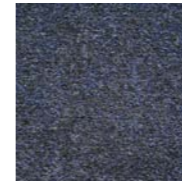
2102 Devon Blue



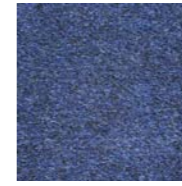
2104 Hampshire Slate



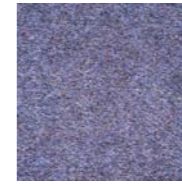
2107 Surrey Blue



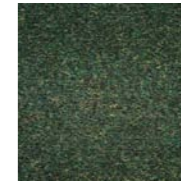
2101 Cornwall Blue



2105 Sussex Sea



2106 Kent Mauve



2119 Lancashire Green



2118 Yorkshire Fern



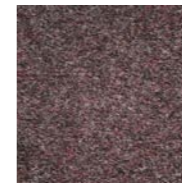
2117 Cheshire Jade



2115 Norfolk Sun



2114 Shropshire Maroon



2112 Suffolk Heather

#### Specification

**Pile Yarn Description:** 85% Polypropylene 15% Nylon

**Roll Length:** 30m

**Roll Width:** 2m

**Total Thickness:** 4.8 mm +/-10%

**Total Weight:** 915 g/m<sup>2</sup> +/-10%

**Castor Chair Rating:** BS EN 985 Pass

**Body Voltage Test:** BS ISO 6356:2000 <2kV

**Product Description:** Heavy Contract Carpet

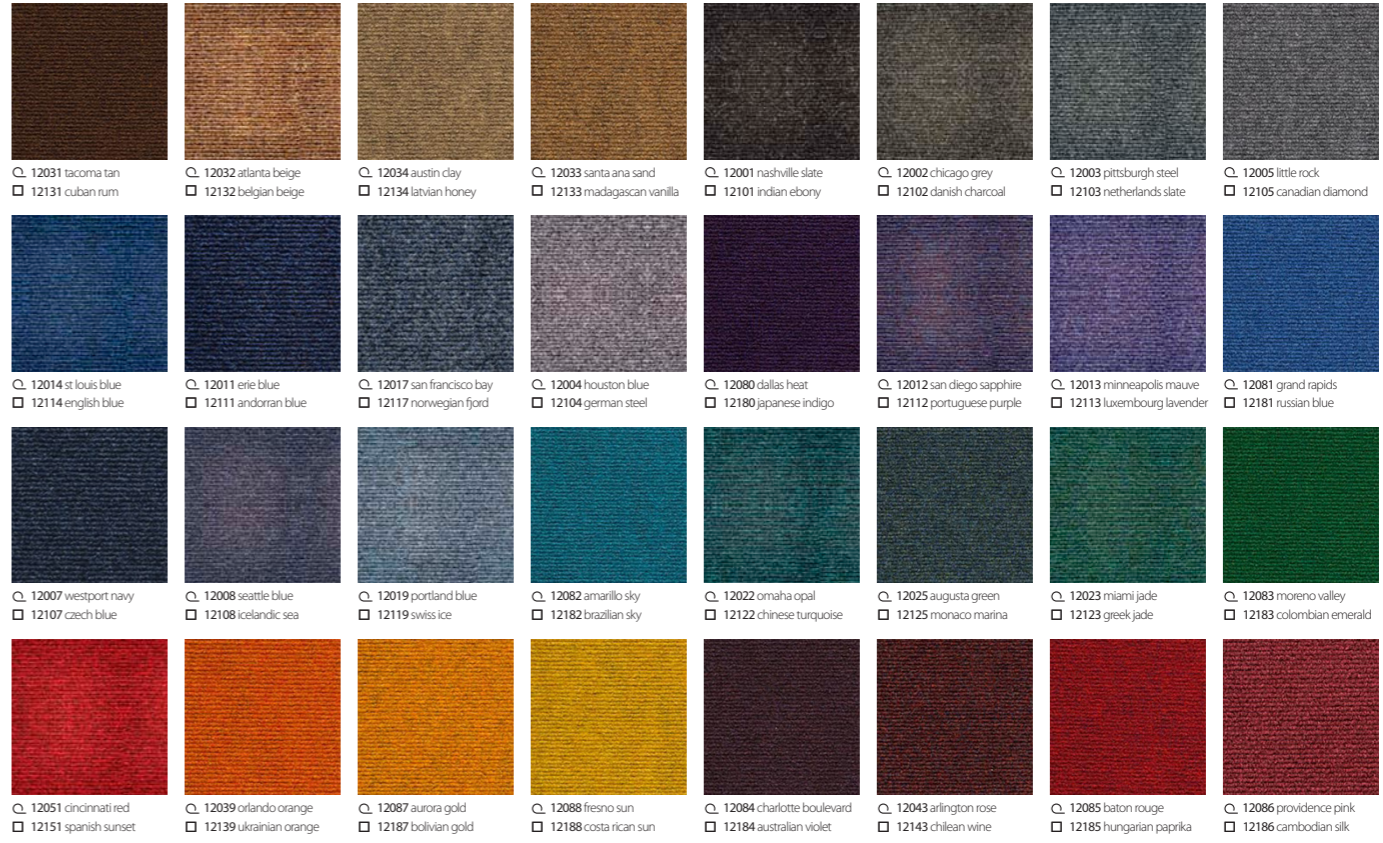
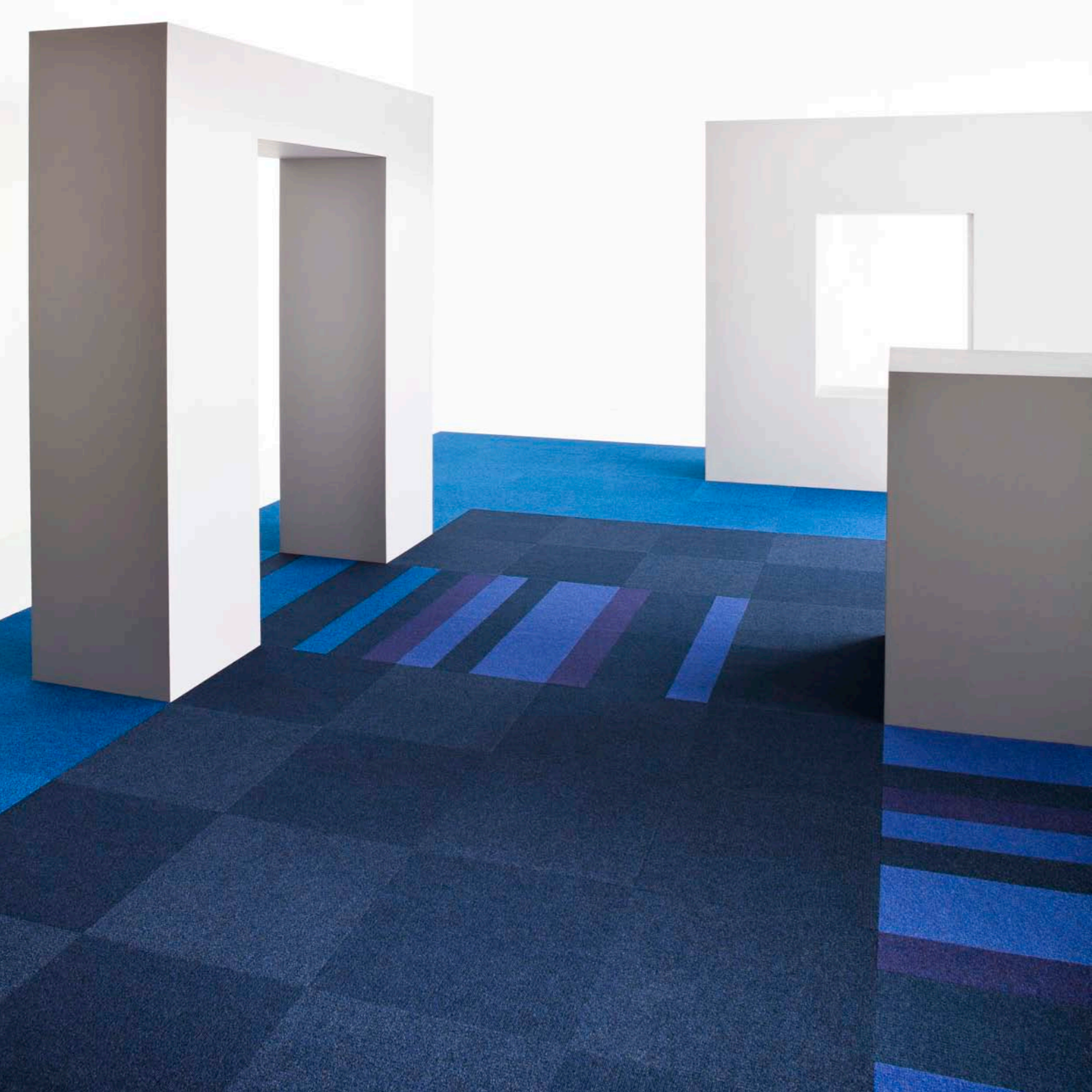
**Colour Fastness To Light:** Minimum grade 6

**Flammability:** Euroclass CF1-s1

## 3230 classic

**3230 classic** is extremely durable fibre bonded carpet, perfectly suited for public buildings, such as schools and gyms and other commercial interiors. Made from a high performance mix of solution dyed fibres, it is available in a choice of 18 practical colourways.





roll 4200 sidewalk  
tile cordiale

**Specification**

**Pile Yarn Description:** 85% Polypropylene, 15% Nylon  
**Roll Length:** 30m  
**Roll Width:** 2m  
**Total Thickness:** 6.0 mm +/-10%  
**Total Weight:** 950 g/m<sup>2</sup> +/-10%  
**Castor Chair Rating:** BS EN 985 Pass  
**Body Voltage Test:** BS ISO 6356:2000 <2kV  
**Product Description:** Heavy Contract Carpet  
**Colour Fastness To Light:** Minimum grade 6  
**Flammability:** Euroclass EF1-s1\*

\*200m<sup>2</sup> minimum order quantity for Cf1-s1 rating

**Specification**

**Pile Yarn Description:** 85% Polypropylene, 15% Nylon  
**Tile Dimensions:** 50 cm x 50 cm  
**Total Thickness:** 7.8 mm +/-10%  
**Pile Weight:** 950 g/m<sup>2</sup>  
**Castor Chair Rating:** BS EN 985 Pass  
**Body Voltage Test:** BS ISO 6356:2000 <2kV  
**Product Description:** Heavy Contract Carpet Tiles  
**Colour Fastness To Light:** Minimum grade 6  
**Flammability:** Euroclass BF1-s1



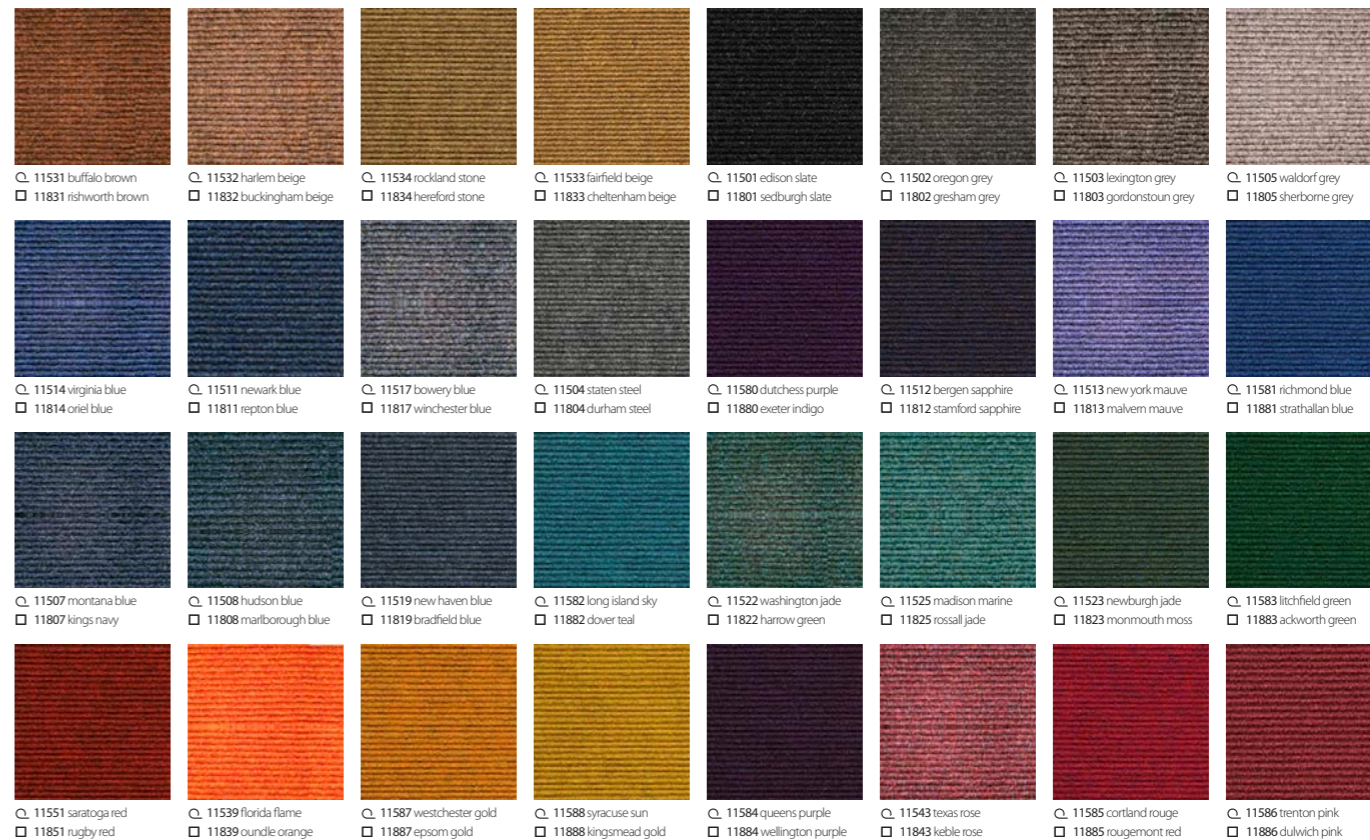
# 4200 sidewalk

**4200 sidewalk** is an extremely durable fine ribbed fibre bonded carpet sheet. It is ideally suited for schools, public buildings and commercial offices. Made from a high performance mix of solution dyed fibres, it is available in a range of 32 vibrant colours.

# cordiale

**cordiale** is an extremely durable fine ribbed fibre bonded carpet tile. It is ideally suited for schools, public buildings and commercial offices. Made from a high performance mix of solution dyed fibres, it is available in a range of 32 vibrant colours.





roll 4200 sidewalk  
tile cordiale

Specification

**Pile Yarn Description:** 85% Polypropylene 15% Nylon  
**Roll Length:** 30m  
**Roll Width:** 2m  
**Total Thickness:** 6.5 mm +/-10%  
**Total Weight:** 975 g/m<sup>2</sup> +/-10%  
**Castor Chair Rating:** BS EN 985 Pass  
**Body Voltage Test:** BS ISO 6356:2000 <2kV  
**Product Description:** Heavy Contract Carpet  
**Colour Fastness To Light:** Minimum grade 6  
**Flammability:** Euroclass EF-s1\*

\*200m<sup>2</sup> minimum order quantity for CfI-s1 rating

Specification

**Pile Yarn Description:** 85% Polypropylene 15% Nylon  
**Tile Dimensions:** 50 cm x 50 cm  
**Total Thickness:** 7.8 mm +/-10%  
**Pile Weight:** 975 g/m<sup>2</sup>  
**Castor Chair Rating:** BS EN 985 Pass  
**Body Voltage Test:** BS ISO 6356:2000 <2kV  
**Product Description:** Heavy Contract Carpet Tiles  
**Colour Fastness To Light:** Minimum grade 6  
**Flammability:** Euroclass BF-s1



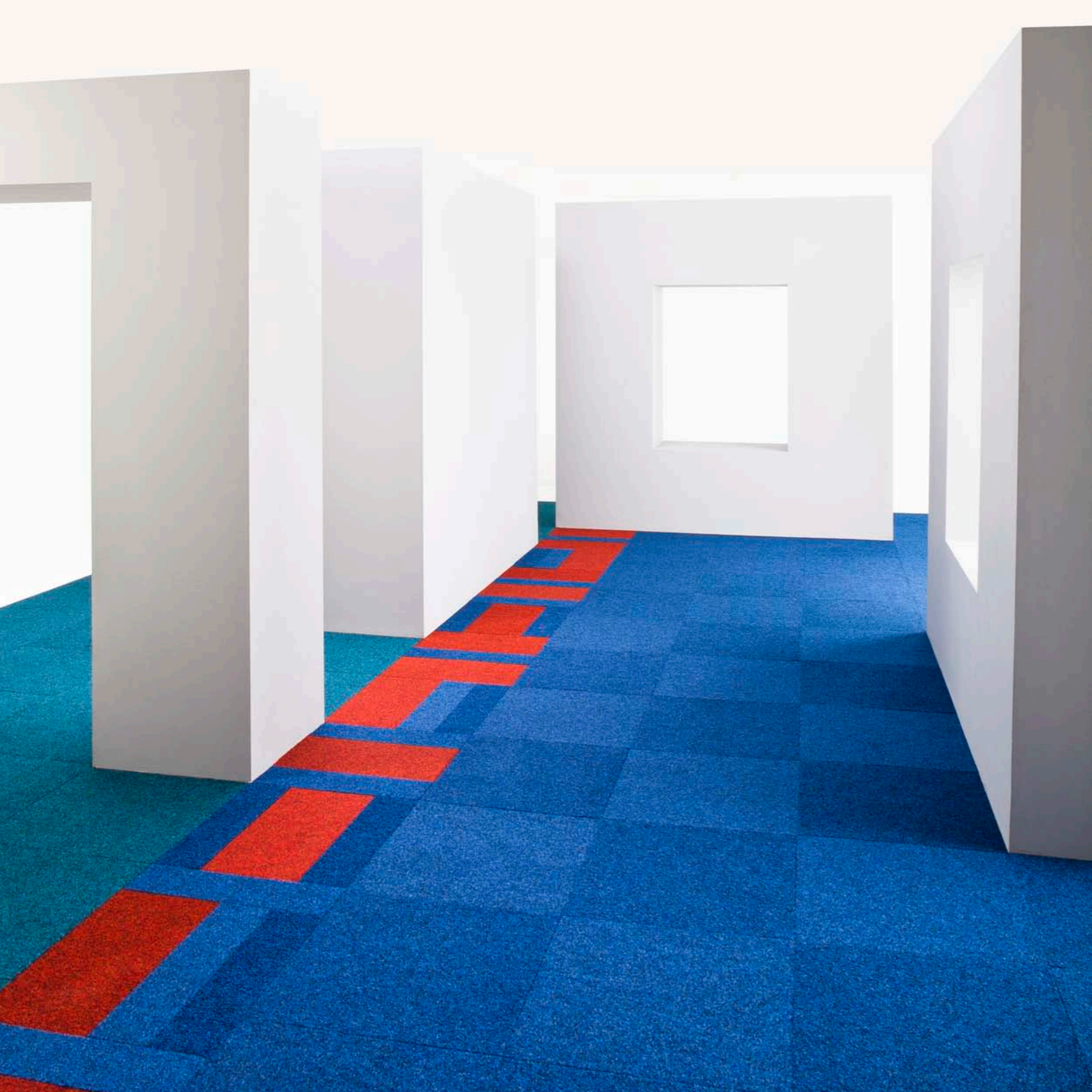
# 4400 broadway

**4400 broadway** is an extremely durable broad ribbed fibre bonded carpet sheet and is particularly suited for public buildings, such as schools, and other commercial interiors. Made from a high performance mix of solution dyed fibres, it is available in a wide range of 32 exciting colourways.

# academy

**academy** is an extremely durable broad ribbed fibre bonded carpet tile and is particularly suited for public buildings, such as schools, and other commercial interiors. Made from a high performance mix of solution dyed fibres, it is available in a wide range of 32 exciting colourways.

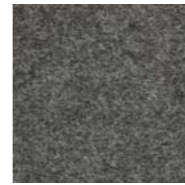




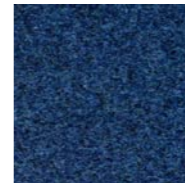
2670 black slate



2640 charcoal grey



2650 steel grey



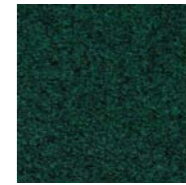
2620 electric blue



2628 ocean blue



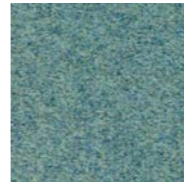
2656 summer sky



2642 teal green



2631 sea blue



2634 aqua



2666 deep indigo



2690 purple haze



2630 flame red

#### Specification

**Pile Yarn Description:** 100% Polypropylene

**Tile Dimensions:** 50 cm x 50 cm

**Total Thickness:** 7.8 mm +/-10%

**Pile Weight:** 1000 g/m<sup>2</sup>

**Body Voltage Test:** BS ISO 63562000 <2kV

**Product Description:** Heavy Contract Carpet Tiles

**Colour Fastness To Light:** Minimum grade 6

**Flammability:** Euroclass Bfl-s1



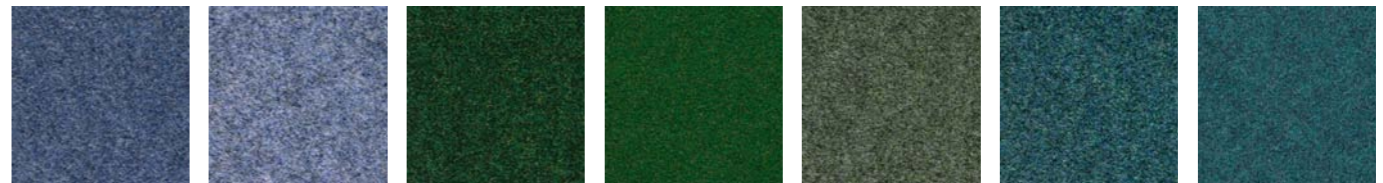
## rialto

**rialto** is an extremely durable heavy contract velour pile carpet tile. It is constructed from 100% polypropylene yarn and is ideally suited for public buildings, such as schools, and other commercial interiors. It is available in 12 colourways.

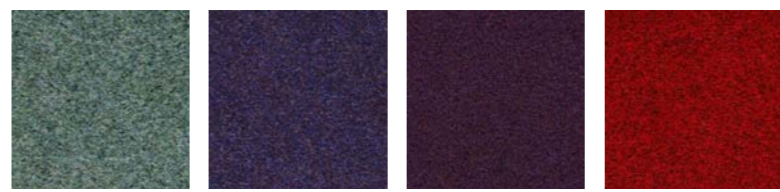




6070 yakama slate    6040 armenian grey    6050 norman steel    6023 iceni blue    6060 barona blue    6081 bavarian blue    6028 saxon blue



6056 spartan mauve    6061 skydancer    6036 phoenician green    6083 norse green    6045 trojan green    6055 dorian azure    6082 mayan sky



6022 assyrian jade    6066 navajo mauve    6090 persian purple    6062 red lake

**Specification**

**Pile Yarn Description:** 85% Polypropylene 15% Nylon  
**Roll Length:** 30m  
**Roll Width:** 2m  
**Total Thickness:** 6.5 mm +/-10%  
**Total Weight:** 1150 g/m<sup>2</sup> +/-10%  
**Castor Chair Rating:** BS EN 985 Pass  
**Body Voltage Test:** BS ISO 6356:2000 <2kV  
**Product Description:** Heavy Contract Carpet  
**Colour Fastness To Light:** Minimum grade 6  
**Flammability:** Euroclass EF-s1\*

\*200m<sup>2</sup> minimum order quantity for CfI-s1 rating

**Specification**

**Pile Yarn Description:** 85% Polypropylene 15% Nylon  
**Tile Dimensions:** 50 cm x 50 cm  
**Total Thickness:** 10 mm +/-10%  
**Pile Weight:** 1200 g/m<sup>2</sup>  
**Castor Chair Rating:** BS EN 985 Pass  
**Body Voltage Test:** BS ISO 6356:2000 <2kV  
**Product Description:** Heavy Contract Carpet Tiles  
**Colour Fastness To Light:** Minimum grade 6  
**Flammability:** Euroclass Bfl-s1



# 5500 luxury

**5500** is an extremely durable fibre bonded carpet sheet, ideally suited for public buildings, such as schools, and other commercial interiors. Made from a high performance mix of solution dyed fibres, it is available in a choice of 18 attractive colourways.

# velour excel

**velour excel** is an extremely durable fibre bonded carpet tile, ideally suited for public buildings, such as schools, and other commercial interiors. Made from a high performance mix of solution dyed fibres, it is available in a choice of 18 attractive colourways.





1834 soap stone



1833 peanut brittle



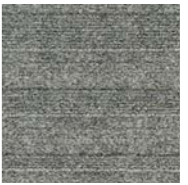
1835 sand blast



1801 carbon steel



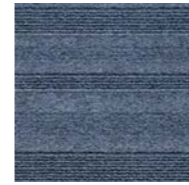
1803 concrete jungle



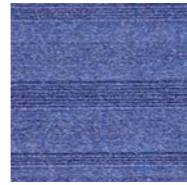
1805 diamond dust



1814 blue monday



1809 ink stone



1813 lavender oil



1882 turquoise mountain



1883 emerald coast



1830 lime street



1812 indigo snake



1890 purple emperor



1886 pink diamond



1845 scarlet runner



1839 mandarin duck



1887 gold quest

#### Specification

**Pile Yarn Description:** 85% Polypropylene 15% Nylon

**Tile Dimensions:** 50 cm x 50 cm

**Total Thickness:** 7.8 mm +/-10%

**Pile Weight:** 950 g/m<sup>2</sup>

**Castor Chair Rating:** BS EN 985 Pass

**Body Voltage Test:** BS ISO 6356:2000 <2kV

**Product Description:** Heavy Contract Carpet Tiles

**Colour Fastness To Light:** Minimum grade 6

**Flammability:** Euroclass Bfl-s1

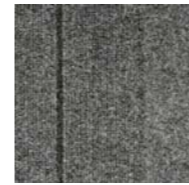


structure bonded

# lateral

**lateral**® is the definitive product offering for all commercial interiors, schools, public buildings, residential schemes and design and build projects. **lateral's** 'ground-breaking' design stems from our innovative, structure bonded manufacturing technology using an unusual mix of textures from cut through to loop pile. It is available in a range of 18 colours.

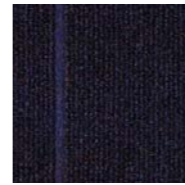




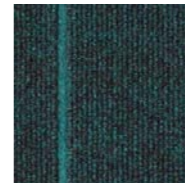
12806 steel cable



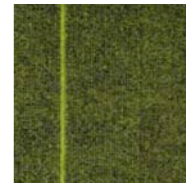
12812 quartz layer



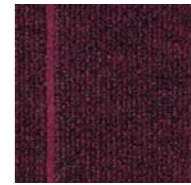
12817 blue rinse



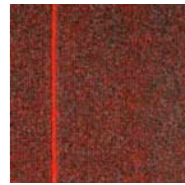
12819 turquoise sea



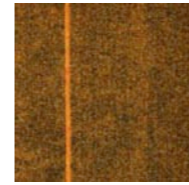
12802 lime light



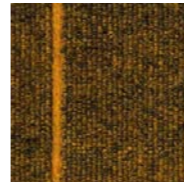
12816 pink gin



12804 scarlet ribbon



12801 sunset strip



12818 gold finger



12807 shore line



12820 purple patch

#### Specification

**Pile Yarn Description:** 85% Polypropylene 15% Nylon

**Tile Dimensions:** 50 cm x 50 cm

**Total Thickness:** 8.0 mm +/-10%

**Pile Weight:** 1000 g/m<sup>2</sup>

**Castor Chair Rating:** BS EN 985 Pass

**Body Voltage Test:** BS ISO 6356:2000 <2kV

**Product Description:** Heavy Contract Carpet Tiles

**Colour Fastness To Light:** Minimum grade 6

**Flammability:** Euroclass Bfl-s1

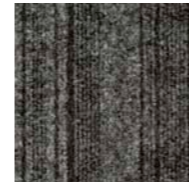


# zip

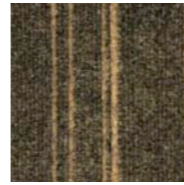
**zip** is the next generation in structure-bonded® design, evolving from the technology that created lateral®.

**zip** uses subtle texture and contrasting colour for a striking effect. Combine **zip** with code and lateral® to produce a unique floor design.





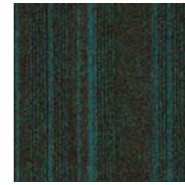
12906 metal shock



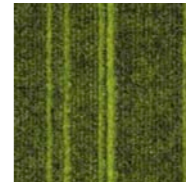
12912 cool stone



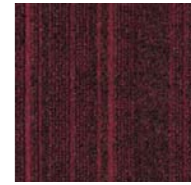
12917 blue velvet



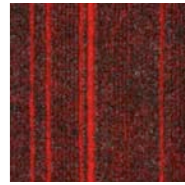
12919 turquoise river



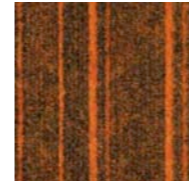
12902 lime zest



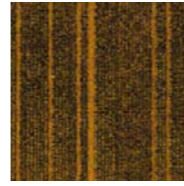
12916 pink panther



12904 scarlet fever



12901 sun burst



12918 rolled gold



12907 sand storm



12920 deep purple

#### Specification

**Pile Yarn Description:** 85% Polypropylene 15% Nylon

**Tile Dimensions:** 50 cm x 50 cm

**Total Thickness:** 8.0 mm +/-10%

**Pile Weight:** 1000 g/m<sup>2</sup>

**Castor Chair Rating:** BS EN 985 Pass

**Body Voltage Test:** BS ISO 6356:2000 <2kV

**Product Description:** Heavy Contract Carpet Tiles

**Colour Fastness To Light:** Minimum grade 6

**Flammability:** Euroclass Bfl-s1



## code

**code** is the next generation in structure-bonded® design, evolving from the technology that created lateral®.

**code** uses subtle contrasting stripes of colour and texture for a stylish defined look. Combine **code** with zip and lateral® to produce a unique floor design.





0858 panama brown



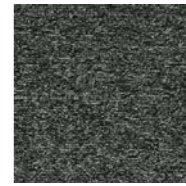
0847 kingston cane



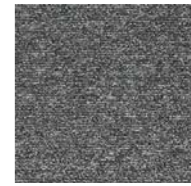
0859 havana tan



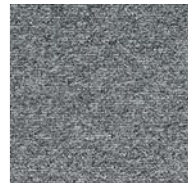
0846 tobago sands



0830 Grenada Grey



0842 antigua steel



0845 dominica dawn



0823 nevis blue



0853 keywest blue



0854 puerto rico purple



0820 barbados blue



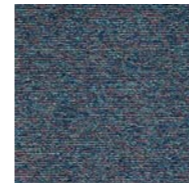
0851 marco blue



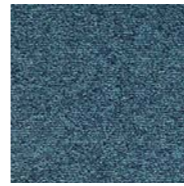
0855 santiago seas



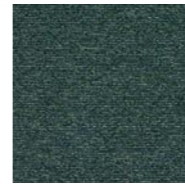
0852 nassau skies



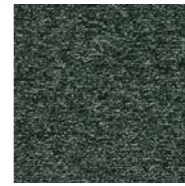
0844 montserrat quartz



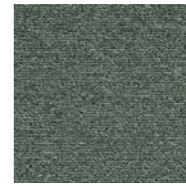
0850 sanibel sea



0857 st kitts green



0856 aruba fern



0825 saona sage



0821 caribbean sea



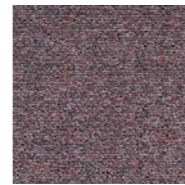
0849 martinique maroon



0848 monte go rum



0840 jamaica ginger



0841 cayman coral

#### Specification

**Pile Yarn Description:** 100% Premium Polypropylene

**Tile Dimensions:** 50 cm x 50 cm

**Pile Height:** 4.4 mm +/-10%

**Total Thickness:** 6.9 mm +/-10%

**Pile Weight:** 600 g/m<sup>2</sup>

**Tufts per m<sup>2</sup>:** 212,760 g/m<sup>2</sup>

**Castor Chair Rating:** BS EN 985 Pass

**Body Voltage Test:** BS ISO 6356:2000 <2kV

**Product Description:** Low Level Loop

**Colour Fastness To Light:** Minimum grade 6

**Flammability:** Euroclass Bfl-s1



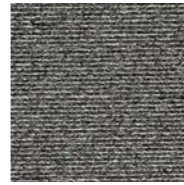
## tivoli 24

**tivoli 24** is a level loop pile carpet tile, available in a choice of 24 attractive tonal colourways, and is the ideal solution for all commercial and public interiors.





7005 Northern



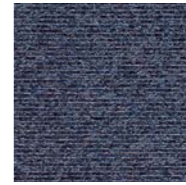
7004 Jubilee



7002 Circle



7012 City



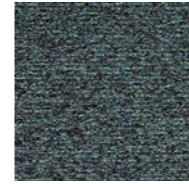
7007 Piccadilly



7009 Victoria



7001 Bakerloo



7003 District

#### Specification

**Pile Yarn Description:** 100% Premium Polypropylene

**Tile Dimensions:** 50 cm x 50 cm

**Pile Height:** 4.4 mm +/-10%

**Total Thickness:** 6.9 mm +/-10%

**Pile Weight:** 600 g/m<sup>2</sup>

**Tufts per m<sup>2</sup>:** 212.760 g/m<sup>2</sup>

**Castor Chair Rating:** BS EN 985 Pass

**Body Voltage Test:** BS ISO 6356:2000 <2kV

**Product Description:** Low Level Loop

**Colour Fastness To Light:** Minimum grade 6

**Flammability:** Euroclass Bfl-s1



## tivoli online

With a contemporary pinstripe appearance, **tivoli online** can be used on its own or perfectly co-ordinated with tivoli 24, the perfect choice for all commercial and public space installations.

Available in a choice of 8 striking colourways.

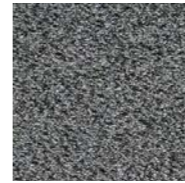




6428 lunar desert



6412 solar sand



6404 iron grey



6416 triton storm



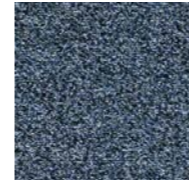
6423 pulsar steel



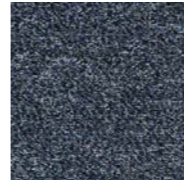
6401 horizon dawn



6413 neutron blue



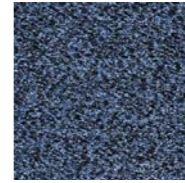
6420 titan slate



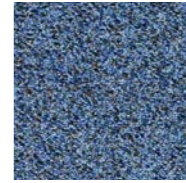
6414 obsidian sky



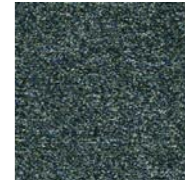
6419 deimus sea



6402 atomic blue



6422 planet blue



6417 echo pool



6408 binary pine



6421 gamma lake



6418 stellar dusk



6429 nebula glow



6427 electron earth

#### Specification

**Pile Yarn Description:** 100% Aquafil Space-Dyed Nylon

**Tile Dimensions:** 50 cm x 50 cm

**Pile Height:** 4.8 mm +/-10%

**Total Thickness:** 7.3 mm +/-10%

**Pile Weight:** 550 g/m<sup>2</sup>

**Tufts per m<sup>2</sup>:** 196,500 g/m<sup>2</sup>

**Castor Chair Rating:** BS EN 985 Pass

**Body Voltage Test:** BS ISO 6356:2000 <2kV

**Product Description:** Low Level Loop

**Colour Fastness To Light:** Minimum grade 6

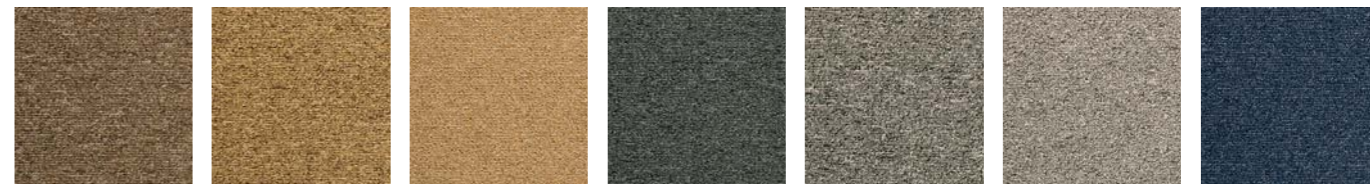
**Flammability:** Euroclass Bfl-s1



# infinity

**infinity** is ideal for open-plan office space, reception areas and public buildings. Made from 100% Aquafil nylon, it is available in a range of 18 contemporary colourways.





51435 Fudge    51436 Timber    51405 Honey    51410 Charcoal    51401 Slate    51402 Flint    51433 Moonlight



51412 Deep Sea    51434 Cumulus    51403 Midnight    51432 Atmosphere    51413 Crystal    51418 Delft    51411 Ocean



51407 Everglade    51406 Spice    51437 Poppy    51438 Sandstone

#### Specification

**Pile Yarn Description:** 100% Branded Solution Dyed Nylon

**Tile Dimensions:** 50 cm x 50 cm

**Pile Height:** 4.5 mm +/-10%

**Total Thickness:** 7.0 mm +/-10%

**Pile Weight:** 550 g/m<sup>2</sup>

**Tufts per m<sup>2</sup>:** 176,850 g/m<sup>2</sup>

**Castor Chair Rating:** BS EN 985 Pass

**Body Voltage Test:** BS ISO 63562:2000 <2kV

**Product Description:** Low Level Loop

**Colour Fastness To Light:** Minimum grade 6

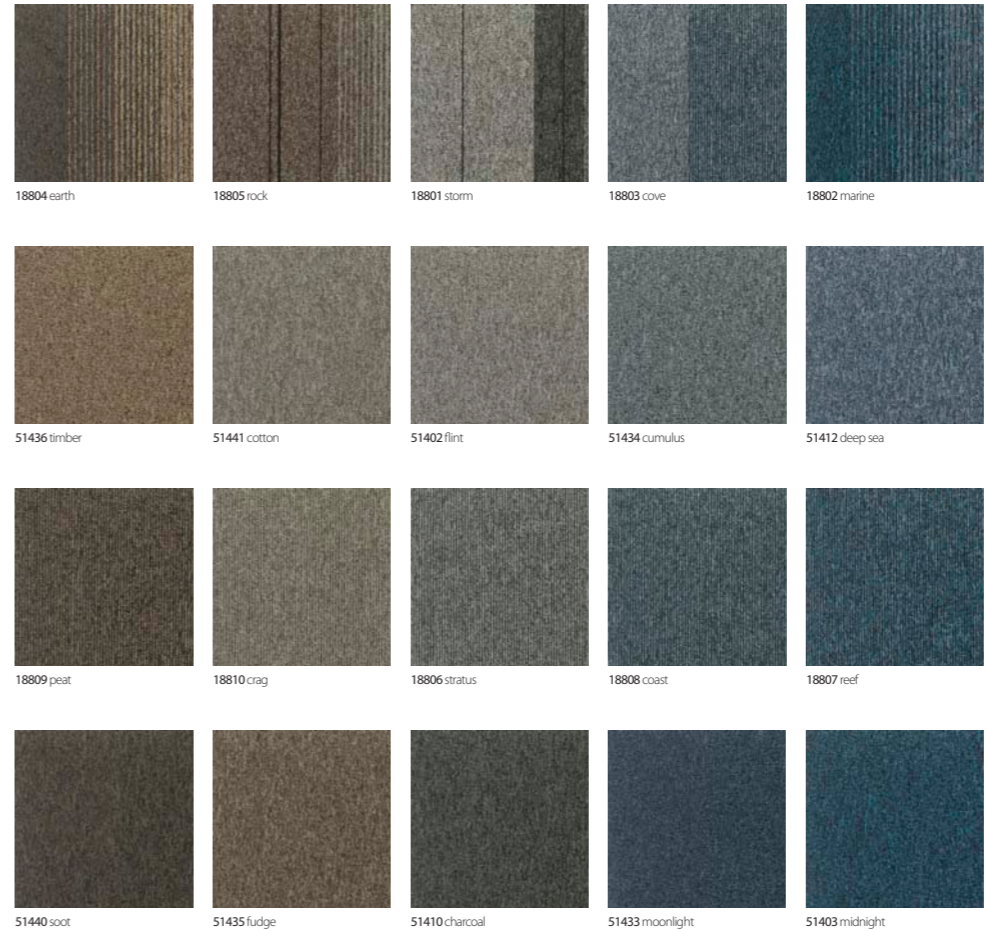
**Flammability:** Euroclass Bfl-s1



## balance

**balance** is a 100% solution dyed nylon level loop pile carpet tile, ideal for commercial, education and public sector projects. **balance's** 18 colourways have been inspired by an eclectic global palette which work equally well when used subtly or boldly over large areas or as accents to define smaller floor spaces.





**Specification**

- Pile Yarn Description:** 100% Branded Solution Dyed Nylon (Polyamide-PA)
- Tile Dimensions:** 50 cm x 50 cm
- Pile Height:** 4.5 mm +/-10%
- Total Thickness:** 7.0 mm +/-10%
- Pile Weight:** 550 g/m<sup>2</sup>
- Tufts per m<sup>2</sup>:** 176,850 g/m<sup>2</sup>
- Castor Chair Rating:** BS EN 985 Pass
- Body Voltage Test:** BS ISO 6356:2000 <2kV
- Product Description:** Low Level Loop
- Colour Fastness To Light:** Minimum grade 6
- Flammability:** Euroclass Bfl-s1

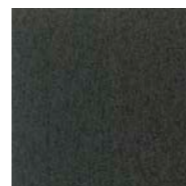


# balance atomic

**balance atomic** is an exciting, contemporary loop pile, with a colour palette ranging from warm beiges, through greys, to cool blues. This BREEAM A+ rated collection comes in 3 co-ordinating designs; a plain, a pinstripe and a versatile, random effect, all of which work alone or complement each other perfectly to create a stylish, individual look for any interior.

balance atomic storm, marine, cove, earth and rock are multi tile designs. Each box of tiles contains a selection of these designs which can be laid monolithic, quarter turn or random to achieve the desired effect.





18501 grey

#### Specification

**Pile Yarn Description:** 100% Branded Solution Dyed Nylon (Polyamide-PA)

**Tile Dimensions:** 50 cm x 50 cm

**Pile Height:** 4.5 mm +/-10%

**Total Thickness:** 7.0 mm +/-10%

**Pile Weight:** 550 g/m<sup>2</sup>

**Tufts per m<sup>2</sup>:** 176,850 g/m<sup>2</sup>

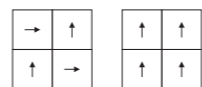
**Castor Chair Rating:** BS EN 985 Pass

**Body Voltage Test:** BS ISO 6356:2000 <2kV

**Product Description:** Low Level Loop

**Colour Fastness To Light:** Minimum grade 6

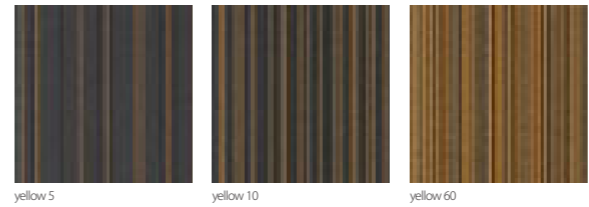
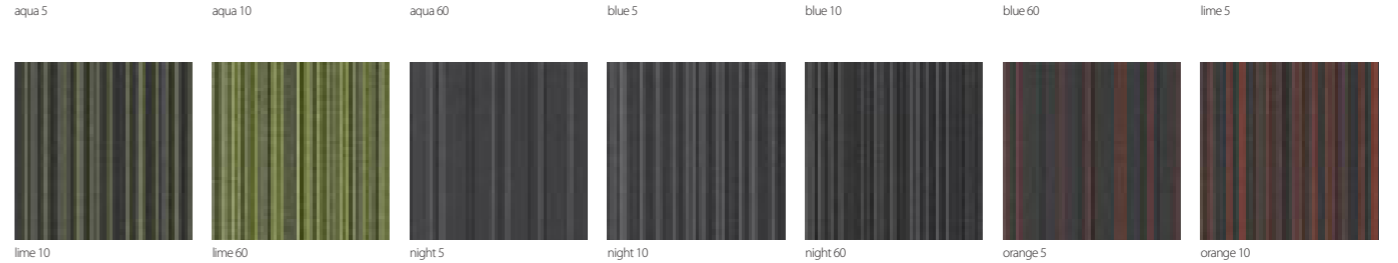
**Flammability:** Euroclass Bfl-s1



## balance greyscale

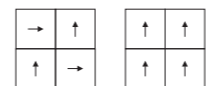
**balance greyscale** is a new dark grey 'field' tile which co-ordinates beautifully with most products from burmatex, including the 8 vibrant colourways from Strands and the new stylish Balance Atomic range. This BREEAM A+ rated loop pile tile provides a subtle, plain contrast against striped or textured areas, for meeting or breakout areas in offices or other corporate buildings.





**Specification**

- Pile Yarn Description:** 100% Xentrys Solution Dyed Nylon
- Tile Dimensions:** 50 cm x 50 cm
- Pile Height:** 4.5 mm +/-10%
- Total Thickness:** 7.0 mm +/-10%
- Pile Weight:** 680 g/m<sup>2</sup>
- Tufts per m<sup>2</sup>:** 180.976 g/m<sup>2</sup>
- Castor Chair Rating:** BS EN 985 Pass
- Body Voltage Test:** BS ISO 6356:2000 <2kV
- Product Description:** Loop Pile
- Colour Fastness To Light:** Minimum grade 6
- Flammability:** Euroclass Bfl-s1



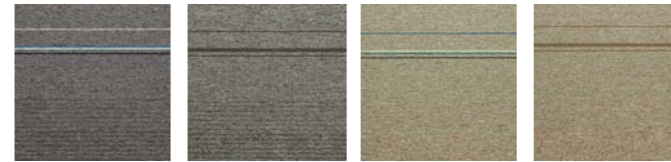
# strands

**strands** is a vibrant and exciting 100% Nylon textured loop carpet tile range offering almost limitless opportunities for floor design.

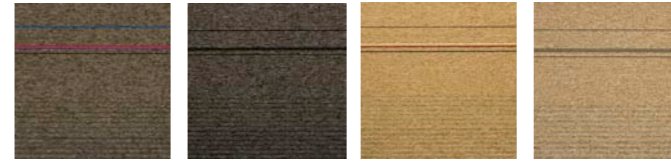
Each tile starts with a background colour of mid grey with a black pinstripe and is then accented by one of eight striking key note colour stripes in three versions: - Strands 5; Strands 10 and Strands 60; so named because the key note colour stripe takes up 5%, 10% and 60% of the carpet tile respectively.

Strands offers the designer combinations of pattern and colour to create and develop unique floor designs starting from tessellated or brick in 5, 10 or 60 up to amazing effects such as random monolithic, brick repeat, monolithic chequerboard using combinations of 5,10 and 60. Schemes can be further enhanced using combinations of other burmatex ranges.





15701 jermyn street    15713 grey flannel    15707 portobello road    15711 chalk stripe



15708 savile row    15712 black pinstripe    15706 burlington arcade    15710 cool cashmere



15703 kings road    15715 blue blazer

#### Specification

**Pile Yarn Description:** 100% Solution Dyed Nylon

**Tile Dimensions:** 50 cm x 50 cm

**Pile Height:** 4.5 mm +/-10%

**Total Thickness:** 7.0 mm +/-10%

**Pile Weight:** 620 g/m<sup>2</sup>

**Tufts per m<sup>2</sup>:** 176,850 g/m<sup>2</sup>

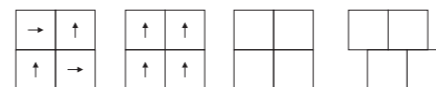
**Castor Chair Rating:** BS EN 985 Pass

**Body Voltage Test:** BS ISO 6356:2000 <2kV

**Product Description:** Textured Loop

**Colour Fastness To Light:** Minimum grade 6

**Flammability:** Euroclass Bfl-s1

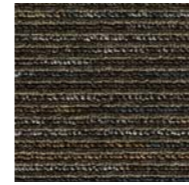


## sector

**sector** is a smart, tailored loop pile carpet tile made from 100% solution dyed nylon, which combines function and sleek styling to create a smart, directional look. **sector's** 10 colourways provide limitless design opportunities for all commercial interiors.

Each sector colourway comprises four individual constructions, tiles A, B, C and D, which make up the overall design. Each box of sector carpet tiles contains a selection of A, B, C and D tiles which can be laid broadloom, tessellated or randomly to achieve the desired effect.

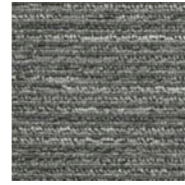




15606 tangle cube



15607 square prism



15612 silver vector



15604 bohemian dome



15605 banded torus



15608 polar curve



15603 twisted sphere

#### Specification

**Pile Yarn Description:** 100% Aquafil & Space Dyed Nylon

**Tile Dimensions:** 50 cm x 50 cm

**Pile Height:** 3.5 mm +/-10%

**Total Thickness:** 6.0 mm +/-10%

**Pile Weight:** 550 g/m<sup>2</sup>

**Tufts per m<sup>2</sup>:** 188,976 g/m<sup>2</sup>

**Castor Chair Rating:** BS EN 985 Pass

**Body Voltage Test:** BS ISO 63562000 <2kV

**Product Description:** Textured Loop

**Colour Fastness To Light:** Minimum grade 6

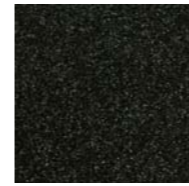
**Flammability:** Euroclass Bfl-s1



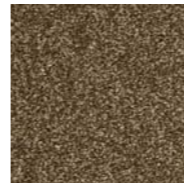
## surface

**surface** is a 100% nylon textured loop pile carpet tile created to coordinate beautifully with any commercial interior scheme. Combinations of solution and space dyed nylon create eight versatile colourways, from earthy tones through to cool neutrals. Architectural exteriors, facades and mathematical and manufactured surfaces inspire the visually textured appearance, creating a feeling of dimension and depth in a practical textured loop construction. This hard wearing, versatile and great value product is suitable for use in any commercial interior project.





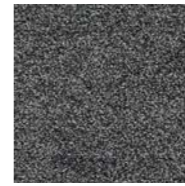
52026 shadow



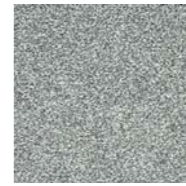
52039 mocha



52040 taupe



52011 onyx



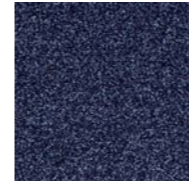
52009 pyrite



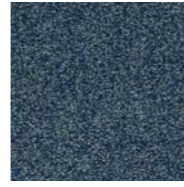
52025 galena



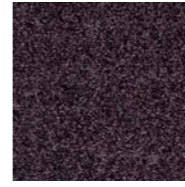
52028 night sky



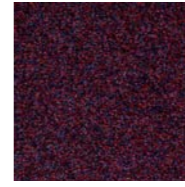
52018 tanzanite



52001 blue john



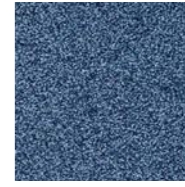
52020 black opal



52014 flash fire



52016 turquoise



52008 tourmaline

#### Specification

**Pile Yarn Description:** 100% Premium Branded Solution Dyed Nylon

**Tile Dimensions:** 50 cm x 50 cm

**Total Thickness:** 8.0 mm +/-10%

**Pile Weight:** 850 g/m<sup>2</sup>

**Tufts per m<sup>2</sup>:** 157,480 g/m<sup>2</sup>

**Castor Chair Rating:** BS EN 985 Pass

**Body Voltage Test:** BS ISO 6356:2000 <2kV

**Colour Fastness To Light:** Minimum grade 6

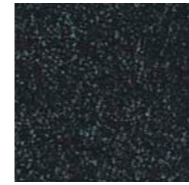
**Flammability:** Euroclass Bfl-s1



## origin

**origin** is a luxurious, contemporary cut pile carpet tile, comprising 13 shades which create a wonderful broadloom appearance when used in large scale or smaller breakout areas. Made from 100% Premium Branded Solution Dyed Nylon, it is suitable for boardrooms, reception areas and most commercial spaces.





11474 aconite



11436 bergamot



11438 moon daisy



11435 cayenne



11483 borage



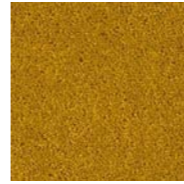
11484 damson



11462 pimento



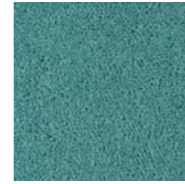
11493 pumpkin



11492 turmeric



11485 speedwell



11491 anemone



14997 lovage

#### Specification

**Pile Yarn Description:** 100% Nylon

**Tile Dimensions:** 50 cm x 50 cm

**Total Thickness:** 10.0 mm +/-10%

**Pile Weight:** 1170 g/m<sup>2</sup>

**Tufts per m<sup>2</sup>:** 157480 g/m<sup>2</sup>

**Castor Chair Rating:** BS EN 985 Pass

**Body Voltage Test:** BS ISO 6356:2000 <2kV

**Colour Fastness To Light:** Minimum grade 5

**Flammability:** Euroclass Bfl-s1

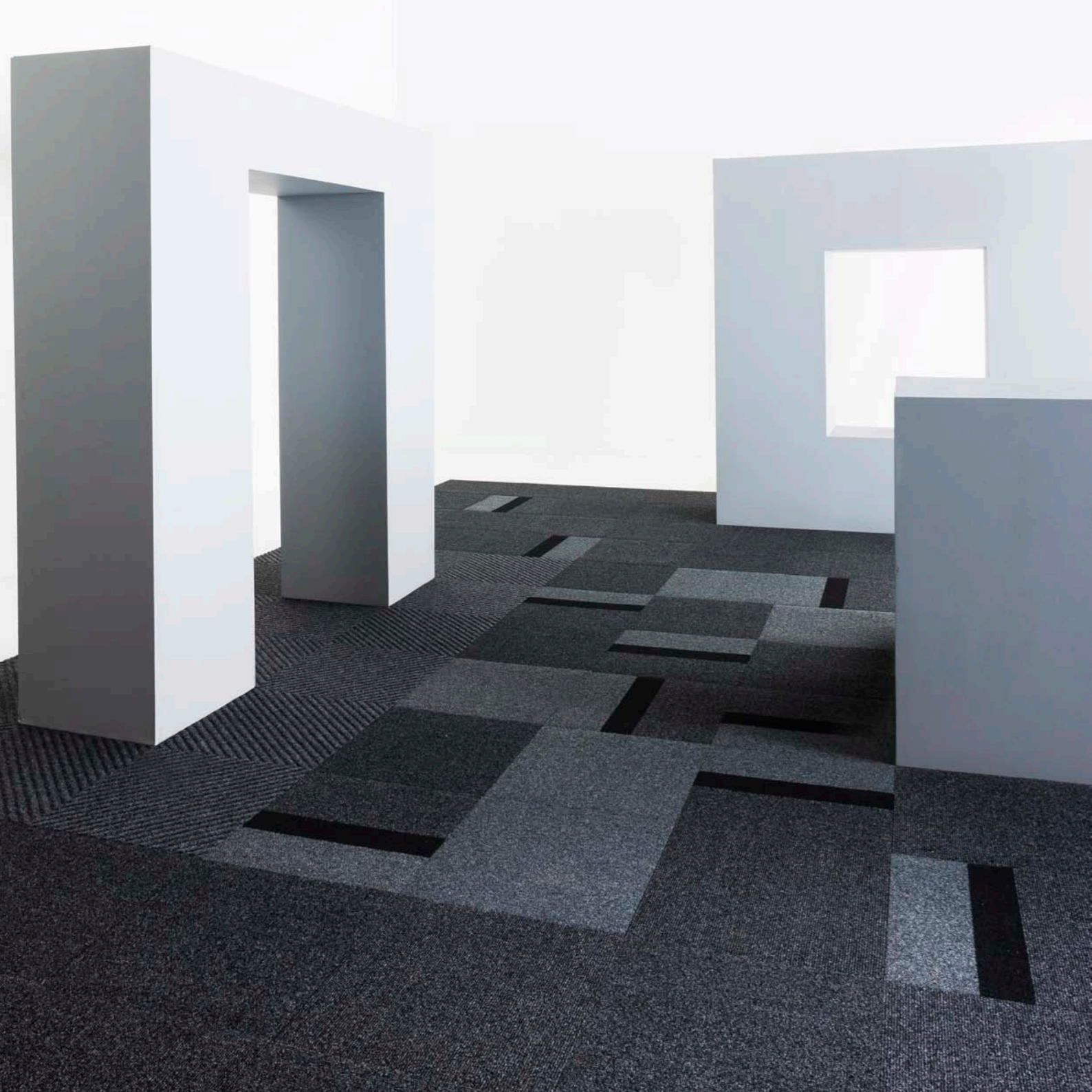


## axis

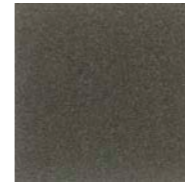
**axis** is a dense twist pile carpet tile made from 100% Invista Antron® spun nylon for a contemporary twist on a classic style.

**axis** has been designed in a palette of 12 inspirational colours to create a stunning floor design or to accentuate co-ordinating products.





18703 graphite block



18701 graphite



18702 graphite stripe



18706 sterling block



18704 sterling



18705 sterling stripe



18709 cobalt block



18707 cobalt



18708 cobalt stripe

#### Specification

**Pile Yarn Description:** 100% Branded Solution Dyed Nylon (Polyamide-PA)

**Tile Dimensions:** 50 cm x 50 cm

**Total Thickness:** 10.0 mm +/-10%

**Pile Weight:** 920 g/m<sup>2</sup>

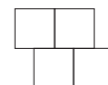
**Tufts per m<sup>2</sup>:** 110,236 g/m<sup>2</sup>

**Castor Chair Rating:** BS EN 985 Pass

**Body Voltage Test:** BS ISO 6356:2000 <2kV

**Colour Fastness To Light:** Minimum grade 6

**Flammability:** Euroclass Bfl-s1



## armour

**armour** offers the ultimate in entrance performance with its combination of absorber and scraper yarns, which protect internal floor finishes by trapping up to 90% of dirt and moisture, tracked in by foot and wheel traffic. The combination of plain, stripe and block stripes in the key blending colours of dark grey, warm grey and blue, will coordinate beautifully with any flooring design scheme. Armour is ideal for primary and secondary entrance areas, as well as lobby, lift areas and staircases.





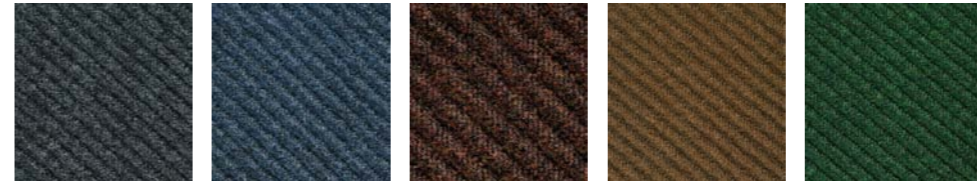
1440 grey    1428 blue    1439 brown    1446 fawn    1436 green

**Specification**

**Pile Yarn Description:** 100% Polypropylene  
**Roll Length:** 30m  
**Roll Width:** 2m  
**Total Thickness:** 10.0 mm +/-10%  
**Total Weight:** 1490 g/m<sup>2</sup> +/-10%  
**Product Description:** Heavy Contract Carpet  
**Colour Fastness To Light:** Minimum grade 6  
**Flammability:** Euroclass EF-s1

# 7700 grimebuster

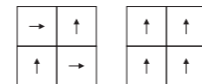
7700 grimebuster is a heavy contract ribbed fibre bonded carpet. It is ideal for withstanding heavy footfall environments and creating an effective dirt barrier for busy entrances, which lead directly from outside environments.



1640 Newmarket Grey    1628 Haydock Blue    1639 goodwood brown    1646 Wincanton Fawn    1636 Curragh Green

**Specification**

**Pile Yarn Description:** 100% Polypropylene  
**Tile Dimensions:** 50 cm x 50 cm  
**Total Thickness:** 12.0 mm +/-10%  
**Pile Weight:** 1170 g/m<sup>2</sup>  
**Total Weight:** 4300 g/m<sup>2</sup>  
**Colour Fastness To Light:** Minimum grade 6  
**Flammability:** Euroclass BF-s1

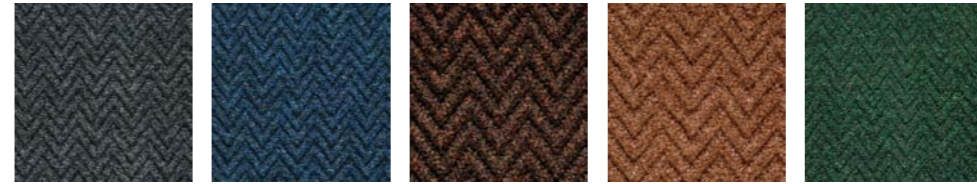


# grimebuster 50

**grimebuster 50** is a heavy contract fibre bonded carpet tile with a deep diagonal rib surface.

It is ideal for withstanding heavy footfall environments and creating an effective dirt barrier for busy entrances, which lead directly from outside environments.





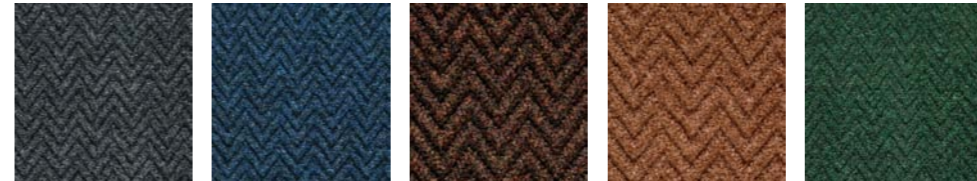
7840 charcoal    7828 blue    7839 brown    7846 fawn    7836 green

**Specification**

**Pile Yarn Description:** 100% Polypropylene  
**Roll Length:** 30m  
**Roll Width:** 2m  
**Total Thickness:** 10.0 mm +/-10%  
**Total Weight:** 1490 g/m<sup>2</sup> +/-10%  
**Product Description:** Heavy Contract Carpet  
**Colour Fastness To Light:** Minimum grade 6  
**Flammability:** Euroclass EF-s1

# 7800 chevrolay

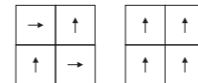
**7700 chevrolay** is a heavy contract chevron ribbed fibre bonded carpet. It is ideal for withstanding heavy footfall environments and creating an effective dirt barrier for busy entrances, which lead directly from outside environments.



6240 Alpha Grey    6228 Beta Blue    6239 Theta Brown    6246 Kappa Fawn    6236 Gamma Green

**Specification**

**Pile Yarn Description:** 100% Polypropylene  
**Tile Dimensions:** 50 cm x 50 cm  
**Total Thickness:** 12.0 mm +/-10%  
**Pile Weight:** 1490 g/m<sup>2</sup>  
**Total Weight:** 4300 g/m<sup>2</sup>  
**Colour Fastness To Light:** Minimum grade 6  
**Flammability:** Euroclass BF-s1

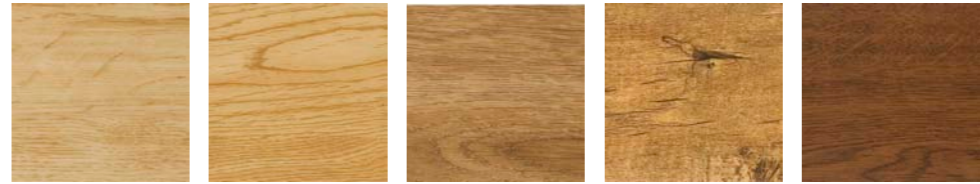


# chevrolay 50

**chevrolay 50** is a heavy contract chevron ribbed fibre bonded tile with deep chevron design.

It is ideal for withstanding heavy footfall environments and creating an effective dirt barrier for busy entrances, which lead directly from outside environments.





80105e norwegian beech    80107e natural oak    80110e english oak    80112e distressed oak    80113e deep walnut

**Specification**

**Dimensions:** 2.5mm thick x 102 mm wide x 914 mm long planks  
**Weight:** 4.75 g/m<sup>2</sup>  
**Classification:** Type T Class 23, 34 & 43  
**Slip Resistance:** R9  
**Flammability:** Bfl-s1

# mode

**mode** is a high quality, commercial vinyl flooring range, available in the warm tones of 5 natural finishes. The planks are 102mm wide x 914mm long x 2.5mm thick.



3612 diamond    3611 suede    3608 sandstone    3610 graphite

**Specification**

**Dimensions:** 5mm thick x 500 mm x 500 mm  
**Weight:** 10.0 g/m<sup>2</sup>  
**Wear Layer:** 0.6 mm  
**Classification:** Type T Class 23, 34 & 43  
**Slip Resistance:** R9  
**Flammability:** Bfl-s1

# versatile

**versatile** is a range of 50cm x 50cm loose lay vinyl tiles and can be used alongside carpet tiles without the need for edging strips. It can be loose laid on raised access flooring allowing easy access to underfloor utilities. Hardwearing, practical and attractive, versatile loose lay vinyl tiles are available in 4 contemporary stone finishes.



## characteristics of this product

Name	Dimensions Rolls (R) / Tiles (T)	Product Type	Pile Description	Carpet Pile Weight g/m <sup>2</sup>	Tile Total Weight g/m <sup>2</sup>	Carpet Total Thickness mm	Tile Total Thickness mm	Number of tufts x/m <sup>2</sup>	Backing	Flammability EN13501	Impact Noise	Number of SKUs	Suitable for Underfloor Heating	Body Voltage kV	Suitability	Colour Fastness to Light BS EN ISO 105	Slip Resistant	Castor Chair EN985
<b>3230 Classic</b>	R 2m x 30m	Fibre Bonded Sheet	85%PP 15%PA	915	915	4.8	4.8	-	Uniform	Cfl-S1	17 dB	18	Yes below 27°	<2.0	HC	>6	NPD	Pass
<b>4200 Sidewalk</b>	R 2m x 30m	Fibre Bonded Sheet	85%PP 15%PA	950		6		-	Uniform	Efl-S1	18 dB	32	Yes below 27°	<2.0	HC	>6	NPD	Pass
<b>4400 Broadway</b>	R 2m x 30m	Fibre Bonded Sheet	85%PP 15%PA	975		6.5		-	Uniform	Efl-S1	19 dB	32	Yes below 27°	<2.0	HC	>6	NPD	Pass
<b>Cordiale</b>	T 50cm x 50cm	Fibre Bonded Tile	85%PP 15%PA	950	4200	6	7.8	-	Accummen®	Bfl-S1	19 dB	32	Yes below 27°	<2.0	HC	>6	NPD	Pass
<b>Academy</b>	T 50cm x 50cm	Fibre Bonded Tile	85%PP 15%PA	975	4200	6.5	7.8	-	Accummen®	Bfl-S1		32	Yes below 27°	<2.0	HC	>6	NPD	Pass
<b>Velour Excel</b>	T 50cm x 50cm	Fibre Bonded Tile	85%PP 15%PA	1200	4900	8	10	-	Accummen®	Bfl-S1	21 dB	18	Yes below 27°	<2.0	HC	>6	NPD	Pass
<b>5500 Sheet</b>										Bfl-S1		12	Yes below 27°	<2.0	HC	>6	NPD	Pass
<b>Rialto</b>	T 50cm x 50cm	Fibre Bonded Tile	100%PP	1000	4450	6	7.8	-	Accummen®	Bfl-S1		12	Yes below 27°	<2.0	HC	>6	NPD	Pass
<b>Lateral</b>	T 50cm x 50cm	Structure Bonded	85%PP 15%PA	950	4200	5.5*	7.8	-	Accummen®	Bfl-S1	18 dB	18	Yes below 27°	<2.0	HC	>6	NPD	Pass
<b>Zip</b>	T 50cm x 50cm	Structure Bonded	85%PP 15%PA	1000	4250	5.5*	8	-	Accummen®	Bfl-S1	17 dB	11	Yes below 27°	<2.0	HC	>6	NPD	Pass
<b>Code</b>	T 50cm x 50cm	Structure Bonded	85%PP 15%PA	1000	4250	5.5*	8	-	Accummen®	Bfl-S1	17 dB	11	Yes below 27°	<2.0	HC	>6	NPD	Pass
<b>Tivoli24</b>	T 50cm x 50cm	Level Loop	100%Premium PP	600	4040	4.4	6.9	212760	Accummen®	Bfl-S1	21 dB	24	Yes below 27°	<2.0	HC	>6	NPD	Pass
<b>Tivoli Online</b>	T 50cm x 50cm	Level Loop	100%Premium PP	600	4040	4.4	6.9	212760	Accummen®	Bfl-S1	21 dB	8	Yes below 27°	<2.0	HC	>6	NPD	Pass
<b>Infinity</b>	T 50cm x 50cm	Level Loop	100%PA Aquafil®	550	4000	4.8	7.3	196500	Accummen®	Bfl-S1	28 dB	18	Yes below 27°	<2.0	33	>6	NPD	Pass
<b>Balance</b>	T 50cm x 50cm	Level Loop	100%PA	550	4300	4.5	7	176850	Accummen®	Bfl-S1	24 dB	18	Yes below 27°	<2.0	33	>6	NPD	Pass
<b>Balance Atomic</b>	T 50cm x 50cm	Level Loop	100%PA	550	4300	4.5	7	176850	Accummen®			20	Yes below 27°	<2.0		>6		Pass
<b>Balance Greyscale</b>	T 50cm x 50cm	Level Loop	100%PA	550	4300	4.5	7	176850	Accummen®			1	Yes below 27°	<2.0		>6		Pass
<b>Strands</b>	T 50cm x 50cm	Textured Loop	100%PA Xentrys®	680	4430	4.5	7	180976	Accummen®	Bfl-S1	23 dB	24	Yes below 27°	<2.0	33	>6	NPD	Pass
<b>Sector</b>	T 50cm x 50cm	Textured Loop	100%PA	620	4370	4.5	7	176850	Accummen®	Bfl-S1		16	Yes below 27°	<2.0	33	>6	NPD	Pass
<b>Surface</b>	T 50cm x 50cm	Textured Loop	100%PA Aquafil	550	4200	3.5	6	188976	Accummen®	Bfl-S1		8	Yes below 27°	<2.0	33	>6	NPD	Pass
<b>Origin</b>	T 50cm x 50cm	Cut Pile	100%PA R- Performance®	850	4300	5	8	157480	Accummen®	Bfl-S1	23 dB	13	Yes below 27°	<2.0	33	>6	NPD	Pass
<b>Axis</b>	T 50cm x 50cm	Cut Pile	100%PA InvistaAntron	1170	5155	7	10	157480	Accummen®	Bfl-S1	23 dB	12	Yes below 27°	<2.0	HC	>6	NPD	Pass

## entrance matting

Name	Pile Description	FORMAT	Backing	Suitability	Number of Colours	Weight g/m <sup>2</sup>	Thickness mm	Flammability EN13501	Price/m <sup>2</sup>
<b>Armour</b>	100%PA	Tile: 50cm x 50cm	Accummen®		9	4500	10	Bfl-S1	
<b>7700 Grimebuster</b>	100% PP	Roll: 2m x 30m	Uniform	HC	5	1490	10	Efl-S1	
<b>7800 Chevrolay</b>	100% PP	Roll: 2m x 30m	Uniform	HC	5	1490	10	Efl-S1	
<b>Grimebuster 50</b>	100% PP	Tile: 50cm x 50cm	Accummen®	HC	5	4300	12	Bfl-S1	
<b>Chevrolay 50</b>	100% PP	Tile: 50cm x 50cm	Accummen®	HC	5	4300	12	Bfl-S1	

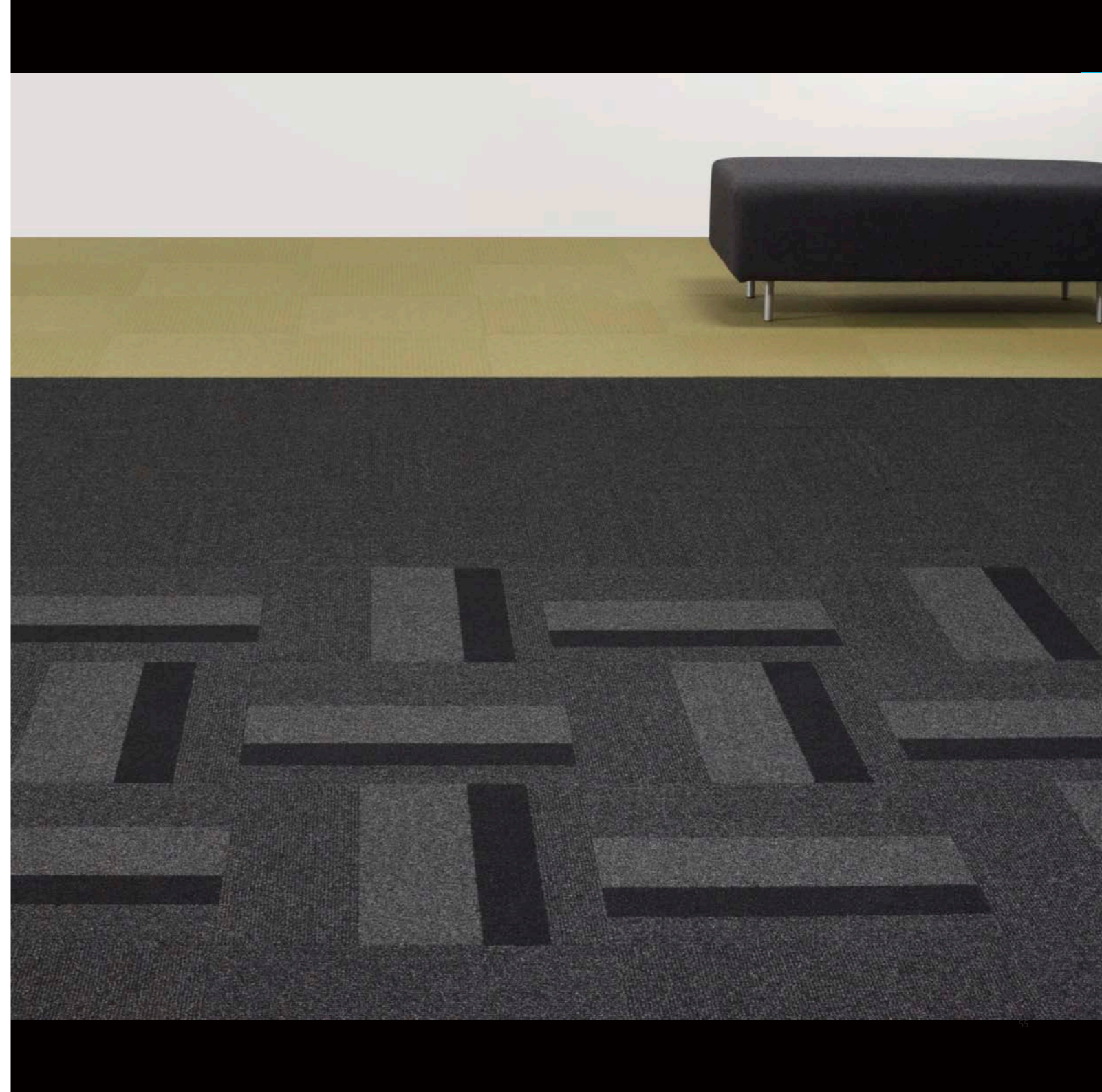
## vinyl floor

Name	Size	Total Thickness	Wear Rating	Slip Resistance DIN51130	Abrasion EN660-2	Acoustics DIN52210	Flammability EN13501	Price/m <sup>2</sup>
<b>Mode</b>	Plank: 102mm x 914mm	2.5mm	0.6mm PU	R 9	T	4 dB	Bfl-S1	
<b>Versatile</b>	Tile: 50cm x 50cm	5.0mm	0.6mm PU	R 9	T		Bfl-S1	



# Appendix

7	3230 classic	31	balance atomic
9	4200 sidewalk	33	balance greyscale
9	cordiale	35	strands
11	4400 broadway	37	sector
11	academy	39	surface
13	rialto	41	origin
15	5500 luxury	43	axis
15	velour excel	45	armour
17	lateral	47	7700 grimebuster
19	zip	47	grimebuster 50
21	code	49	7800 chevrolay
23	tivoli 24	49	chevrolay 50
25	tivoli online	51	mode
27	infinity	51	versatile
29	balance		





**burmatex<sup>®</sup>**